

BILL OF MATERIALS:

Item	Part Name	Qty	Material
1	Grease Fitting	1	Stainless Steel
2	Bonnet	1	AISI 4130
3	Indicated Tray	1	Stainless Steel
4	Washer	1	Carbon Steel
5	Nut	1	Carbon Steel
6	Hand Wheel	1	Ductile Iron
7	Screw	3	Stainless Steel
8	Anti-rotating Plug	1	Brass
9	Washer	1	Spring Steel
10	Nut	1	ASTM A194 2H
11	Screw	1	Carbon Steel
12	Retainer Washer	1	Spring Steel
13	Union Nut	1	AISI 4130
14	O-Ring	1	HNBR
15	Packing	1	PTFE+HNBR
16	Packing Washer	1	Stainless Steel
17	Retainer Washer	1	Spring Steel
18	Plug	1	AISI 4130+Stainless Steel
19	Stem ASSY	1	17-4PH+Tungsten Carbide
20	Bean ASSY	1	AISI 410+Tungsten Carbide
21	Sealing Ring	1	Stainless Steel
22	Body	1	AISI 4130(60K)
23	Arrow Head-LH	1	Stainless Steel
24	Arrow Head	1	Stainless Steel
25	Nameplate	1	Stainless Steel
26	Rivet	12	Stainless Steel

TECHNICAL SPECS:

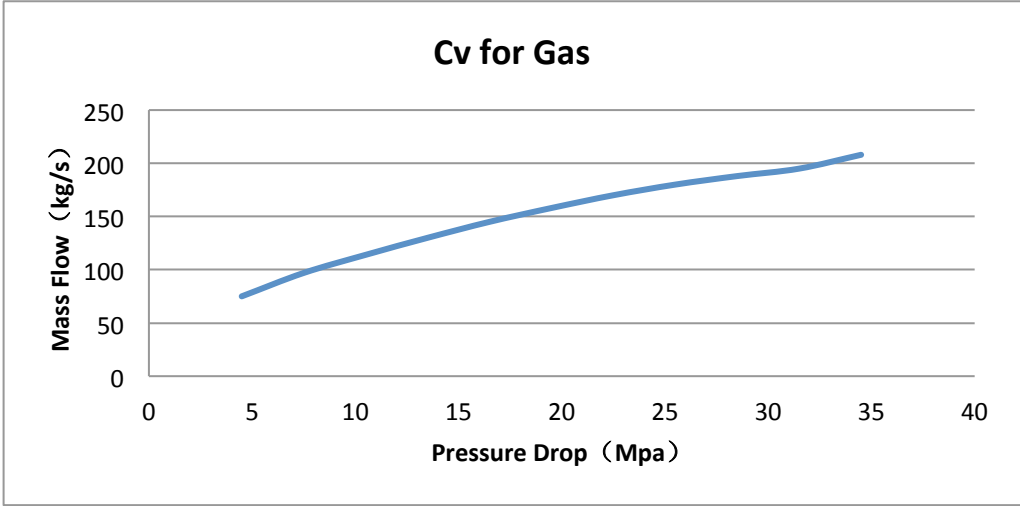
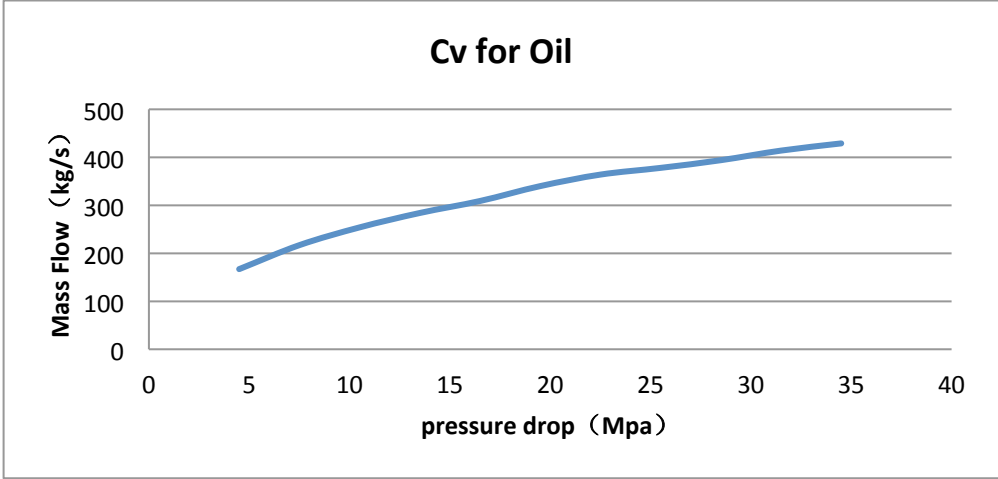
1. Working Temperature Class: LV(-46~121°C);
2. Material Class:EE-0.5;
3. Product Specification Level:PSL2;
4. Performance Requirement Level:PR1;
5. Standard:API 6A&ISO 10423;
6. NACE MR-01-75-H2S;
7. Dye Penetrant test on stem and MPI test on body and bonnet.

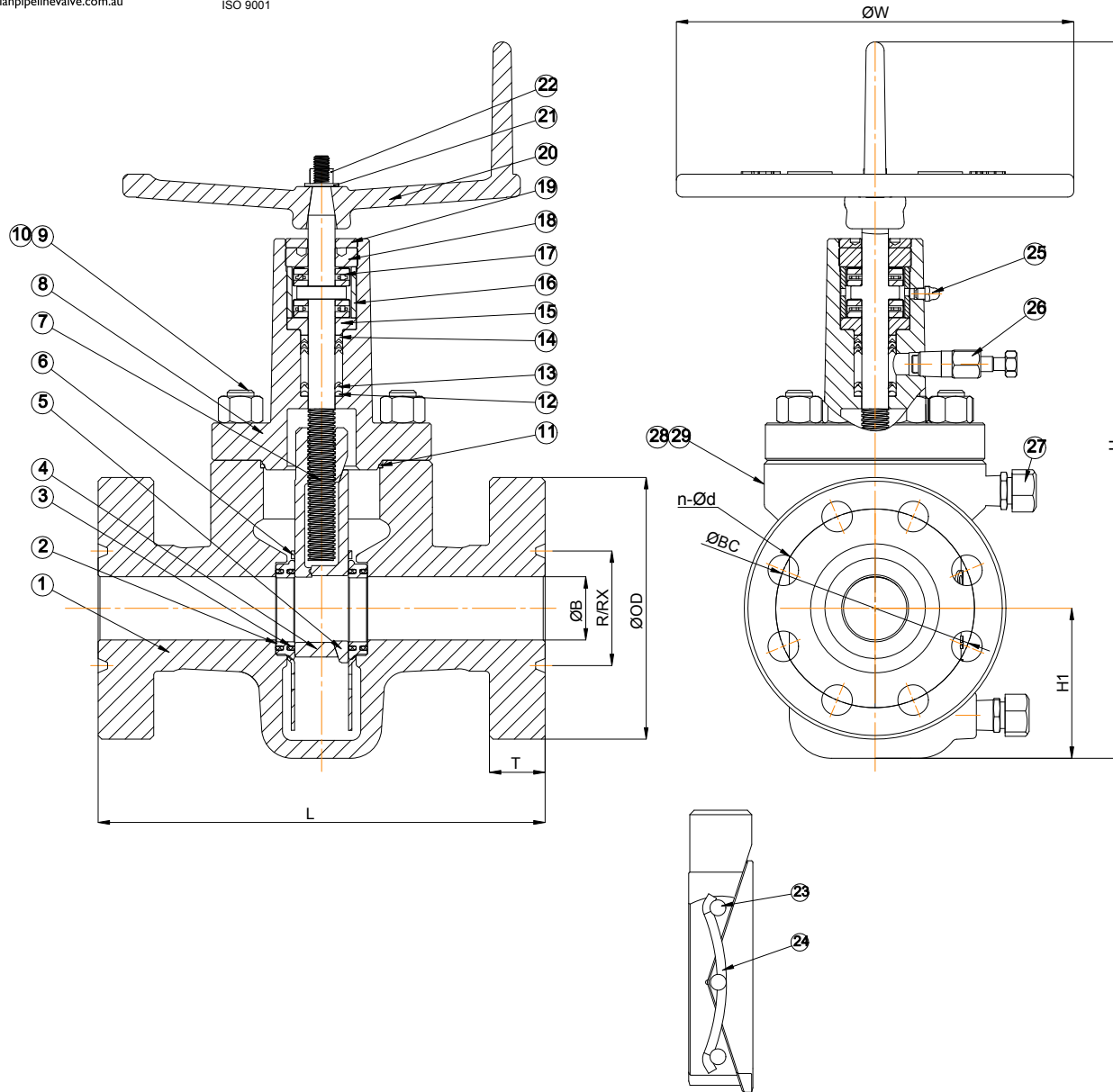
DIMENSIONS:

UNITS:MM

Size	ID(in)	B	OD	T	BC	nxd	RX	X	Y	W	H	Weight (Kg)
3-1/8x5M	128/64	79.4	265	55.6	203.2	8x32	RX35	263.5	295.3	400	750	125

Adjustable Choke Valve CAN, 3-1/8" 5M	ORDER NO.	509799BT	APPROVED	B.T.
	ITEM NO:	1	CHECKED	C.C.
Australian Pipeline Valve	REV:	01	DRAWN	S.Q.





BILL OF MATERIALS:

Item	Part Name	Qty	Material
1	Body	1	ZG30CrMo equal to ASTM-A4874C(60K)
2	Seat	2	AISI 410+QPQ Nitriding
3	Seal Ring	4	RPTFE
4	Gate Body	1	AISI 410+QPQ Nitriding
5	Gate Segment	1	AISI 410+QPQ Nitriding
6	Guide	2	Stainless Steel
7	Stem	1	17-4PH+Nitriding
8	Bonnet	1	AISI 4130
9	Stud	8	A320 L7M
10	Nut	8	A194 2HM
11	Bonnet Ring	1	316SS
12	Lower Packing	1	PTFE
13	Middle Packing	3	PTFE
14	Upper Packing	1	PTFE
15	Packing Gland	1	Carbon Steel ZINC PLATED
16	Bearing Spacer Sleeve	1	Carbon Steel ZINC PLATED
17	Bearing	2	Bearing Steel
18	Gland Nut	1	Carbon Steel ZINC PLATED
19	Retainer Locknut	1	Carbon Steel ZINC PLATED
20	Hand Wheel	1	Ductile Iron
21	Washer	1	Carbon Steel ZINC PLATED
22	Nut	1	A194 2HM
23	Pin	6	Stainless Steel
24	Spring	2	INCONEL X-750
25	Grease Fitting	1	Stainless Steel
26	Injection Valve	1	Stainless Steel
27	Grease Injection	2	Stainless Steel
28	Nameplate	1	Stainless Steel
29	Rivet	4	Stainless Steel

TECHNICAL SPECS:

- Working Temperature Rating:LV(-46~121°C);
- Material Class:EE-0.5;
- Product Specification Level:PSL2;
- Performance Requirement:PR1;
- Medium:Oil and Gas;
- Standard: API 6A & ISO 10423;
- NACE MR-01-75-H2S;
- Dye Penetrant test on stem and MPI test on body and bonnet.

DIMENSIONS:

UNITS:MM

Size	B	OD	T	BC	n-d	R (RX)	L Flange	W	H1	H	Weight (Kg)
7-1/16"X5M	179.4	395.0	92.1	317.5	12-39	46	813.0	760	355	1185	650

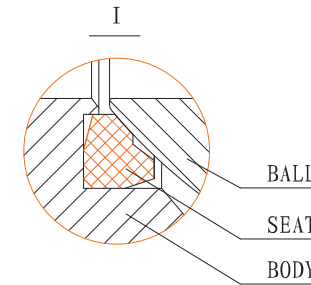
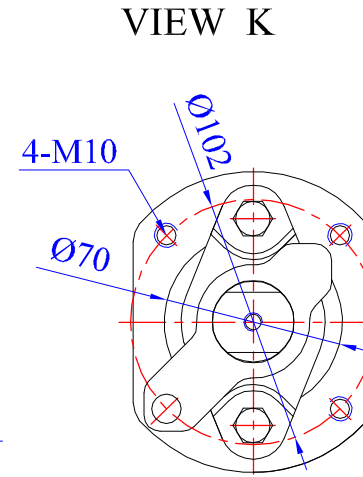
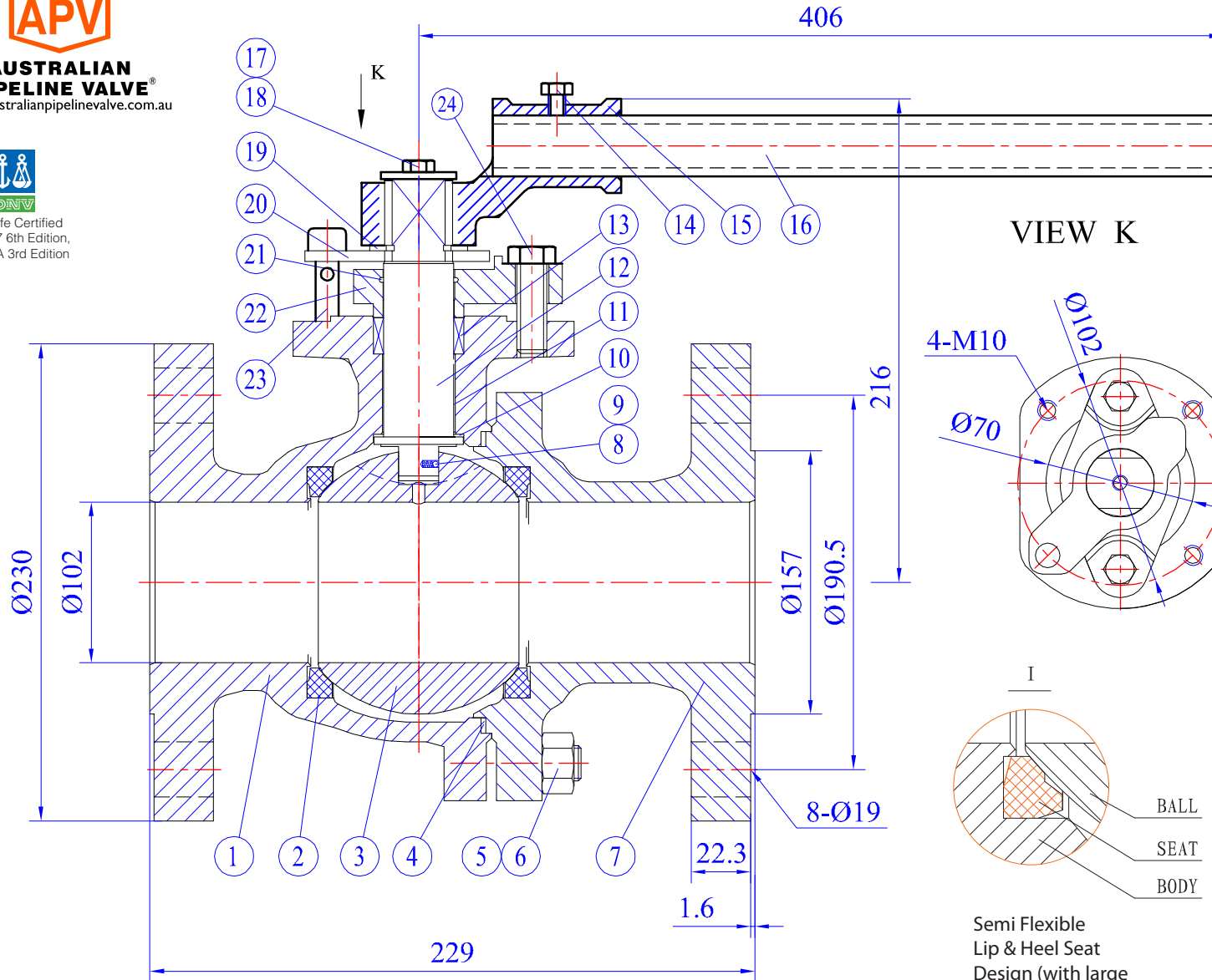
Expanding Gate Valve 7-1/16" 5M Flanged Ends Full Port, Full Through Conduit Australian Pipeline Valve	ORDER NO.	509799BT	APPROVED	B.T.
	ITEM NO:	9	CHECKED	C.C.
	REV:	01	DRAWN	S.Q.



AUSTRALIAN PIPELINE VALVE
www.australianpipelinevalve.com.au



Firesafe Certified
API 607 6th Edition,
API 6FA 3rd Edition



Semi Flexible
Lip & Heel Seat
Design (with large
contact face area)

BILL OF MATERIALS:

NO.	PART NAME	MATERIAL
1	BODY	A216 WCB-IC
2	SEAT	R.PTFE
3	BALL	A182 F316
4	GASKET	316SS+GRAPHITE
5	STUD	A193 B7
6	NUT	A194 2H
7	BODY CAP	A216 WCB-IC
8	ANTI STATIC SPRING	A276 316
9	ANTI STATIC BALL	A276 316
10	THRUST BEARING	PTFE
11	STEM BEARING	PTFE
12	STEM	A182 F316
13	STEM PACKING	GRAPHITE
14	RETAINER BOLT	C.S.+Zn
15	WRENCH SLEEVE	A216 WCB
16	WRENCH POLE	C.S.+Zn
17	RETAINER BOLT	C.S.+Zn
18	RETAINER WASHER	C.S.+Zn
19	EXTERNAL CIRCLIP	A276 316
20	STOP PLATE	A276 304
21	ANTI STATIC SPRING	A276 316
22	GLAND FLANGE	A351 CF8
23	PIN	A276 304
24	GLAND BOLT	A193 B8

TECHNICAL SPECS:

DESIGN: ANSI B16.34, API 608
FACE TO FACE DIMENSION: ANSI B16.10
END FLANGE DIMENSION: ANSI B16.5 RF
INSPECTION: API 6D
FIRE SAFE: API 607, 6FA

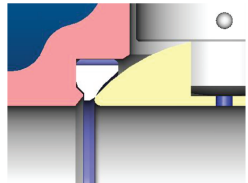
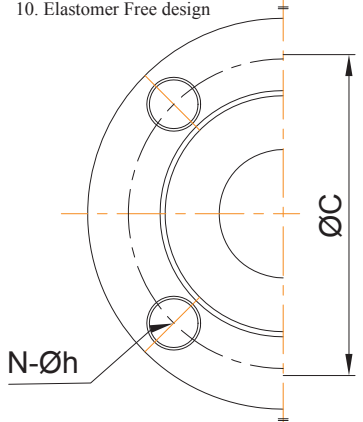
DIMENSIONS IN: MM

SIZE & CLASS	ITEM	APV MODEL NUMBER	REMARKS
4"- CLASS 150	236	SLFSBV01-AB1AHAABA1	NACE MR0175

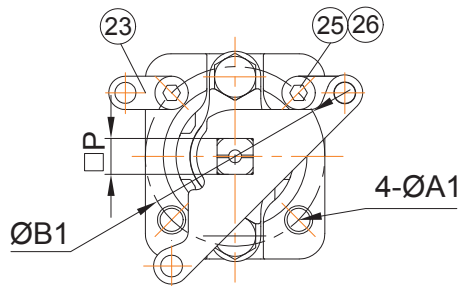
Soft Seated Floating Ball Valve	DRAWING NO.	ADM-2060	APPROVED	B.T.
Australian Pipeline Valve	DATE:	-	CHECKED	S.Q.
	REV:	01	DRAWN	C.C.

TECHNICAL SPECS:

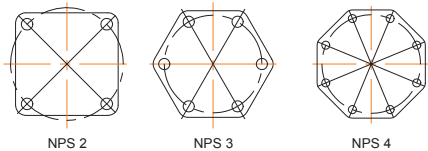
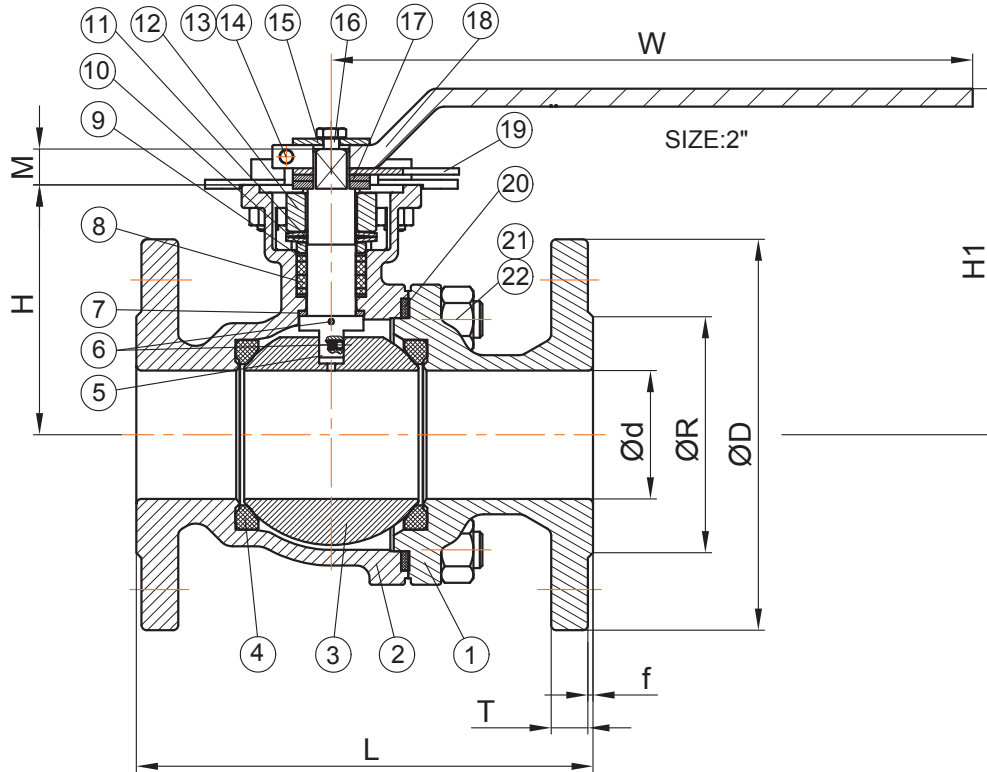
1. Nominal Pressure: Class 150
2. Design: API608 & ASME B16.34
3. Face to Face: ASME B16.10
4. End Flange: ASME B16.5
5. Firesafe: ISO 10497, API607 5th/6th/7th
6. Antistatic BS5351/ISO 17292-2010
7. Inspection & Testing: API598
8. Temperature Range: -50°C ~ 200°C
9. NACE MR-0175 & MR-0103
10. Elastomer Free design



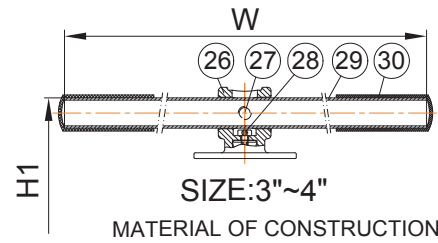
Live Seat Design



Direct Mount Pad
(side access to adjust packing)



Inside flange pattern
(straight edges not scalloped)



MATERIAL OF CONSTRUCTION

BILL OF MATERIALS:

No.	PART NAME	MATERIALS
1	End Cap	CF8M
2	Body	CF8M
3	Ball	CF8M
4	Ball Seat	TFM1600 (PTFE)
5	Stem	316
6	Anti-Static	316
7	Thrust washer	TFM1600 (PTFE)
8	Packing	GRAFOIL
9	Bushing	316
10	Gland	316
11	Belleville Washers	301
12	Packing Gland	CF8M
13	Bolting	A2-70
14	Nut	A2-70
15	Washer	304
16	Bolting (2")	A2-70
17	Handle Gland (2")	304
18	Handle (2")	CF8
19	Stem Stopper (2")	304
20	Body Gasket (2")	316LSS+PTFE+GRAFOIL
21	Bolting	A193-B8M
22	Bolt Nut	A194-8M
23	Lock Device	304
24	Stop Bolt	A2-70
25	Stop Nut	A2-70
26	Handle Adapter (3"~4")	CF8
27	Set Screwed (3"~4")	A2-70
28	Bolting (3"~4")	A2-70
29	Pipe Handle (3"~4")	A53+PLATED Zn
30	Handle Sleeve (3"~4")	VINYL PLASTIC



Heavy API608 Design

- Adjustable packing gland is accessible for tightening without disassembly

DIMENSIONS: MM

PART NO: SLFSBV01-ABIAPCABD6Y

SIZE	d	L	R	D	C	T	f	N	h	H	H1	M	P	A1	A2	B1	B2	W	ISO5211
2"	50	178	92.0	150	120.7	14.3	2	4	19.0	97	135	14	14	9	non	70	non	250	F07
3"	76	203	127.0	190	152.4	17.5	2	4	19.0	143	203	18	17	9	11	70	102	350	F07~F10
4"	100	229	157.0	230	190.5	22.3	2	8	19.0	162	225	23.5	22	non	11	non	102	400	F10

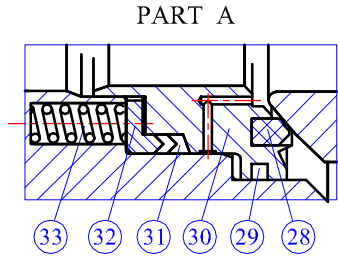
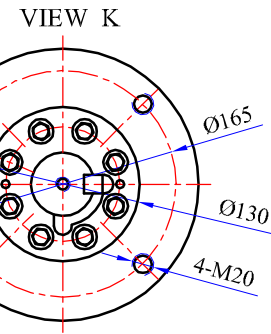
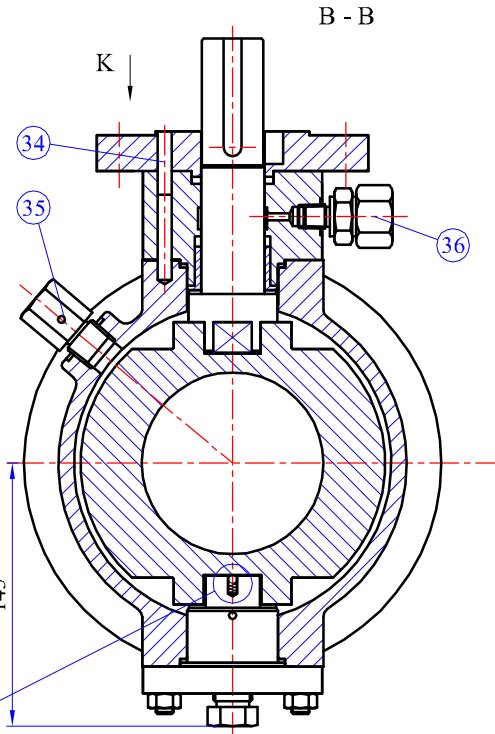
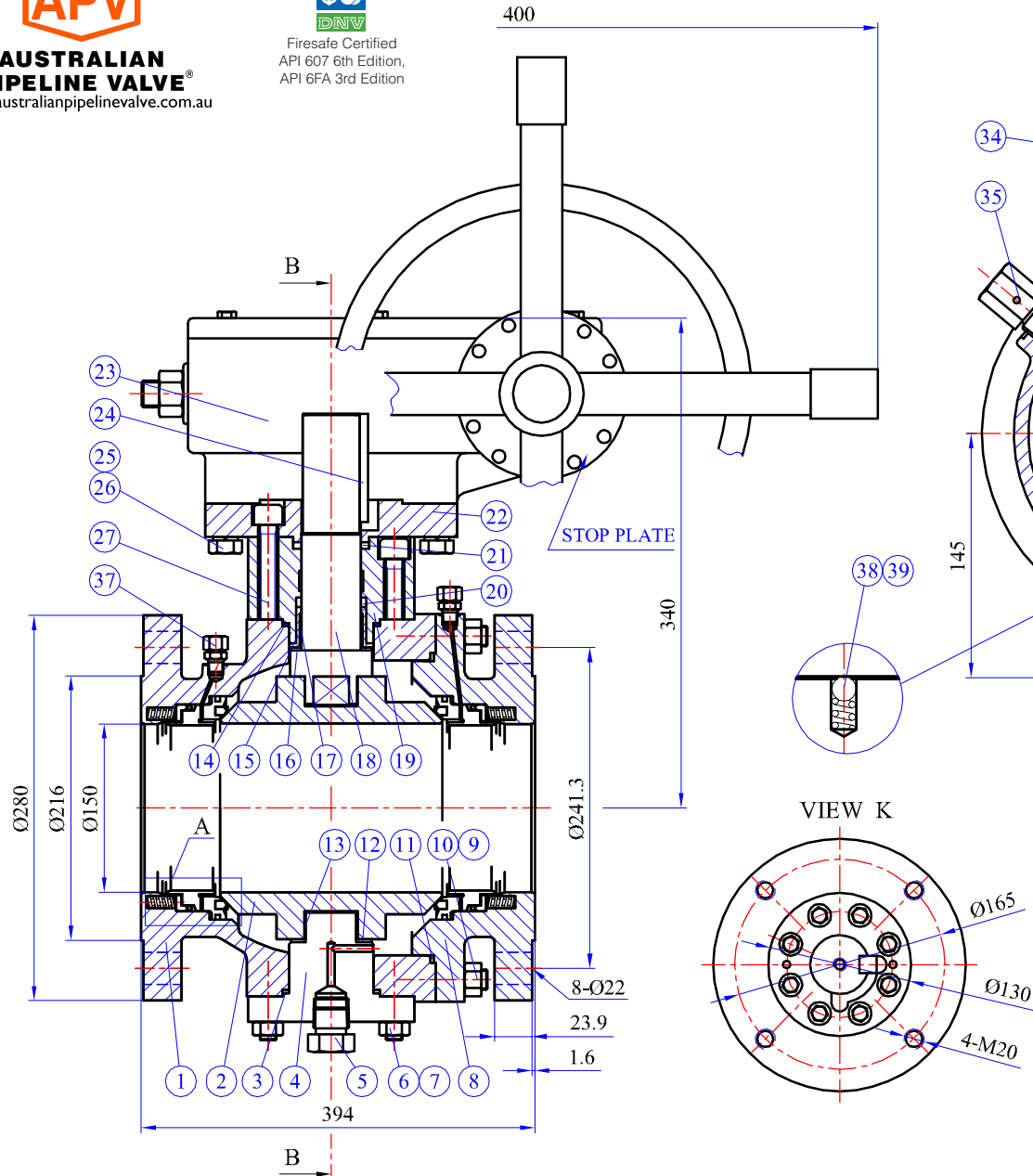
Ball Valve 2PC, 2" ~ 4", CF8M, Class 150, RF	DWG NO:	SLFSBV01-A-CF8M KV-L641-A(MN)	APPROVED:	B.T.
	DWG TYPE:	ASSEMBLY	CHECKED:	C.C.
Australian Pipeline Valve	REV:	01	DRAWN:	S.Q.



AUSTRALIAN PIPELINE VALVE®
www.australianpipelinevalve.com.au



Firesafe Certified
API 607 6th Edition,
API 6FA 3rd Edition



TECHNICAL SPECS:

DESIGN: ANSI B16.34, API 6D
FACE TO FACE DIMENSION: ANSI B16.10
END FLANGE DIMENSION: ANSI B16.5 RF
INSPECTION: API 6D
FIRESAFE: API 607, API 6FA

BILL OF MATERIALS:

NO.	PART NAME	MATERIAL
1	BODY	A351 CF8M-IC
2	BALL	A182 F316
3	GASKET	316SS+GRAPHITE
4	TRUNNION	A182 F316
5	DRAIN PLUG	A276 316
6	STUD	A193 B8M
7	NUT	A194 8M
8	BODY CAP	A351 CF8M-IC
9	STUD	A193 B8M
10	NUT	A194 8M
11	GASKET	316SS+GRAPHITE
12	THRUST WASHER	316SS+R.PTFE
13	TRUNNION BEARING	316SS+R.PTFE
14	GASKET	316SS+GRAPHITE
15	BACKUP RING	A276 316
16	THRUST WASHER	316SS+R.PTFE
17	STEM BEARING	316SS+R.PTFE
18	STEM	A182 F316
19	GUIDE RING	A182 F316
20	COATED O-RING	SILICON+PFA
21	STEM PACKING	GRAPHITE
22	TOP FLANGE	A276 316
23	G.O.	ASSEMBLY
24	KEY	A276 316
25	BOLT	A193 B8M
26	FLEXIBLE WASHER	A276 316
27	SCREW BOLT	A193 B8M
28	SEAT INSERT	R.PTFE
29	DUST PROOF RING	GRAPHITE
30	SEAT	A182 F316
31	SEAT SEAL	V PTFE
32	BACKUP RING	A276 316
33	SPRING	INCONEL X-750
34	PIN	A276 304
35	VENT VALVE	A276 316
36	STEM SI VALVE	A276 316
37	SEATS SI VALVES	A276 316
38	ANTI STATIC SPRING	A276 316
39	ANTI STATIC BALL	A276 316

DIMENSIONS IN: MM

SIZE & CLASS	ITEM	APV MODEL NUMBER	REMARKS
6"- CLASS 150	96	FS9000-FTAC1153AAACD	NACE MR0175

Soft Seated Trunnion Mounted Ball Valve		DRAWING NO.	ADM-2068	APPROVED	B.T.
Australian Pipeline Valve		PO:	506762BT	CHECKED	S.Q.
		REV:	01	DRAWN	C.C.



AUSTRALIAN PIPELINE VALVE®
www.australianpipelinevalve.com.au



Firesafe Certified
API 607 6th Edition,
API 6FA 3rd Edition

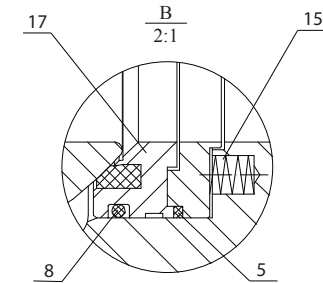
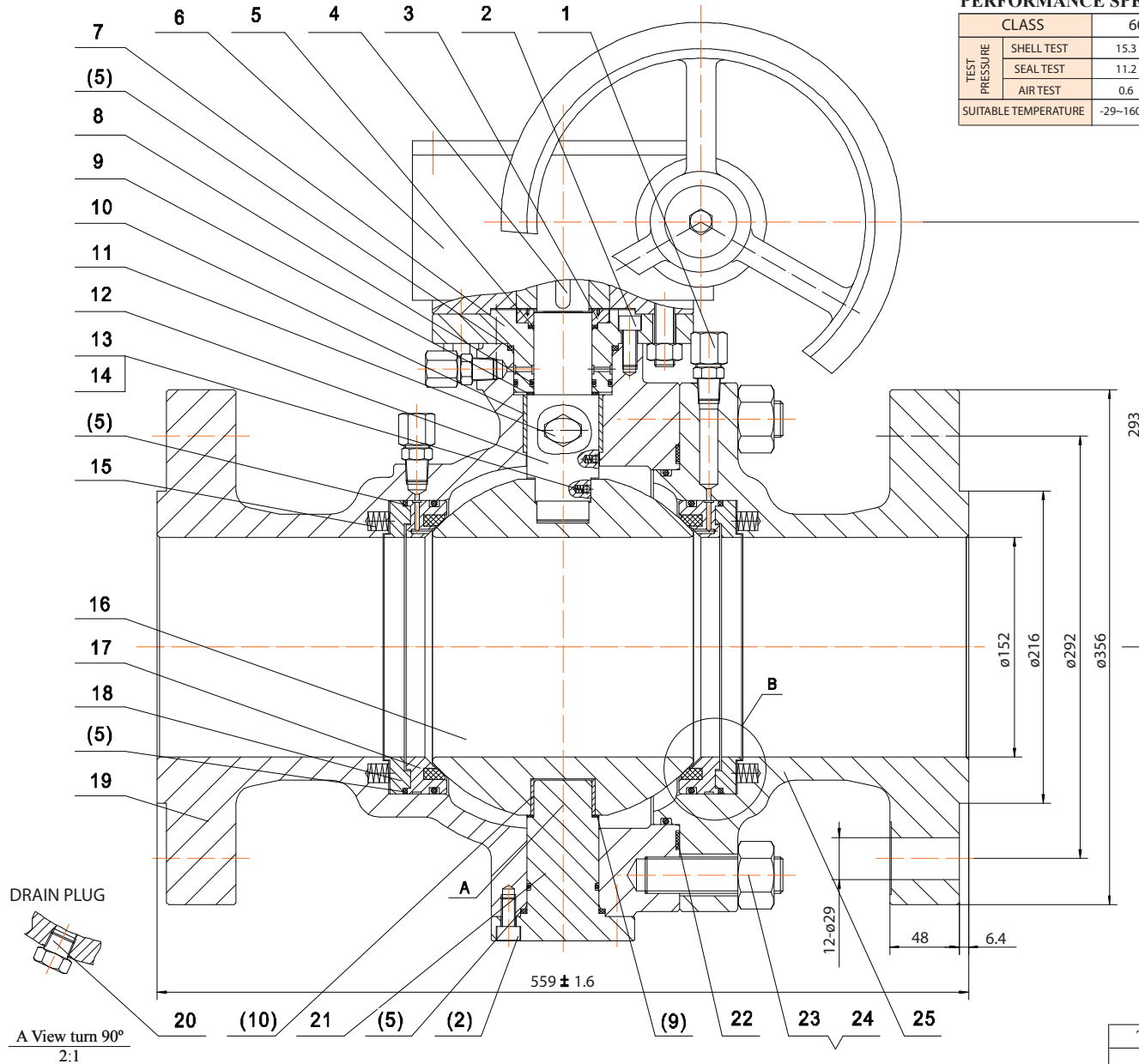
APV MODEL NUMBER:
FS9000-FTCI1523AAACB

PERFORMANCE SPECS:

CLASS		600LB	
TEST PRESSURE	SHELL TEST	15.3	MPa
	SEAL TEST	11.2	
	AIR TEST	0.6	
SUITABLE TEMPERATURE		-29~160°C	

BILL OF MATERIALS:

ITEM	PART NAME	MATERIAL
1	SEALANT INJECTION	ASTM A276 316
2	BOLT	ASTM A193 B7M + ZP
3	BUSHING	ASTM A105
4	KEY	ASTM A29 1045 + ZP
5	SEALANT RING	FLEXIBLE Gr. 316SS WIRE
6	WORMGEAR ACUATOR	ASSEMBLY
7	BUSHING FLANGE	ASTM A216 WCC
8	O-RING	VITON AED
9	GASKET	PTFE
10	SLIDING BEARING	316+PTFE
11	VENT VALVE	A276 316
12	STEM	ASTM A182 F316
13	STEEL BALL (Antistatic)	SS316
14	SPRING (Antistatic)	SS316
15	SPRING	INCONEL X750
16	BALL	ASTM A182 F316
17	SEAT	ASTM A182 F316+RPTFE
18	WASHER	ASTM A182 316
19	BODY	ASTM A216 WCC
20	DRAIN VALVE	A276 316
21	TRUNNION	ASTM A182 316
22	GASKET	316SS+GRAPHITE
23	BOLT	ASTM A193 B7M + ZP
24	NUT	ASTM A194 2HM + ZP
25	BONNET	ASTM A216 WCC



TECHNICAL REQUIREMENTS:

1. Design Manufacturing acc. to API6D
2. Face to Face acc. to ANSI B16.10
3. End flanges acc. to ANSI B16.5
4. Pressure temperature norm acc. to ANSI B16.34
5. Inspection and Test acc. to API598
6. Firesafe certified API607 6th edition & API6FA 3rd edition
7. Antistatic BS5351
8. Materials comply with NACE MR-01-75
9. Investment Cast

Trunnion Ball Valve 6" 600LB		ORDER NO.	503539BT -67	APPROVED	B.T.
Australian Pipeline Valve		DATE:	-	CHECKED	S.Q.
		REV:	01	DRAWN	C.C.



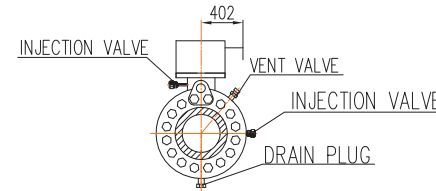
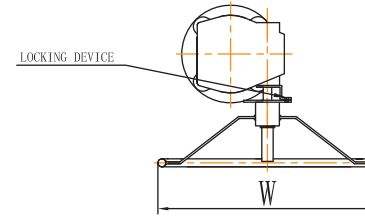
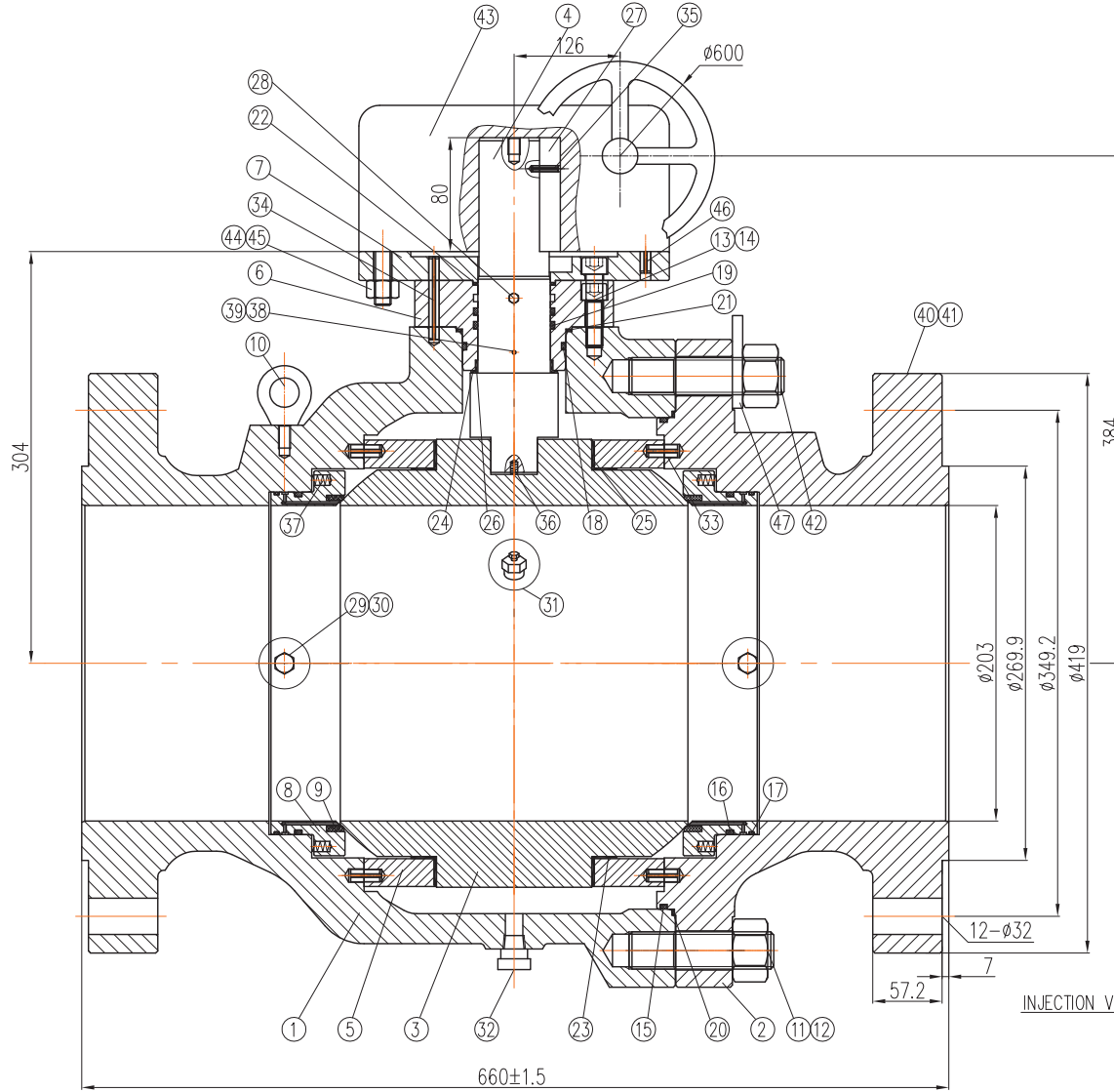
AUSTRALIAN PIPELINE VALVE®
www.australianpipelinevalve.com.au



API 622 & ISO 15848-1
Fugitive Emission Certified



API 607, ISO 10497-5
Firesafe Certified



BILL OF MATERIALS:

ITEM	PART NAME	MATERIAL
1	BODY	ASTM A216 WCB
2	ADAPTER	ASTM A216 WCB
3	BALL	ASTM A182 F316
4	STEM	ASTM A182 F51
5	TRUNNION PLATE	ASTM A182 F316
6	BONNET	ASTM A105+0.075ENP
7	MOUNTING PLATE	ASTM A105
8	SEAT RETAINER	ASTM A182 F316
9	SEAT INSERT	DEVLON
10	LIFT EYE	ASTM A29 1020
11	BOLT	ASTM A193 B7
12	NUT	ASTM A194 2H
13	SCREW	ASTM A193 B7
14	SCREW	ASTM A193 B7
15	O-RING	VITON AED
16	O-RING	VITON AED
17	O-RING	VITON AED
18	O-RING	VITON AED
19	O-RING	VITON AED
20	GASKET	GRAPHITE
21	GASKET	GRAPHITE
22	GASKET	GRAPHITE
23	WASHER	PTFE
24	THRUST WASHER	PEEK
25	BEARING	CS+PTFE
26	BEARING	CS+PTFE
27	SQUARE KEY	ASTM A29 1045
28	INJECTION VALVE	ASTM A182 F304
29	INJECTION VALVE	ASTM A182 F304
30	CHECK VALVE	ASTM A182 F304
31	VENT VALVE	ASTM A182 F304
32	DRAIN PLUG	ASTM A182 F304
33	PIN	ASTM A29 1020
34	PIN	ASTM A29 1566
35	PIN	ASTM A29 1566
36	ANTISTATIC SPRING	ASTM A313 316
37	SEAT SPRING	INCONEL X-750
38	ANTISTATIC SPRING	ASTM A313 316
39	ANTISTATIC BALL	ASTM A182 F316
40	NAME PLATE	ASTM A240 316
41	RIVET	ASTM A276 304
42	BOLT	ASTM A193 B7M
43	GEARBOX	ASTM A48 No. 35A
44	BOLT	ASTM A193 B7
45	NUT	ASTM A194 2H
46	PIN	ASTM A29 1566
47	LIFT EYE	Q235-B

TECHNICAL SPECS:

DESIGN STD.	API 6D	END CONN.	RF
PRES. & TEMP.	ASME B16.34	PRES. TEST	API 6D
FACE TO FACE	ASME B16.10	END DIME.	ASME B16.5
MARKING	MSS SP-25	F.S. DESIGN	API 607
PAINTING	-	SPECIAL	NACE MR-0175

PERFORMANCE SPECS:

SHELL TEST PRE.(HYD.)	15.4 MPa
SEAT TEST PRE.(HYD.)	11.4 MPa
SEAT TEST PRE.(AIR)	0.6 MPa
TEMPERATURE(°C)	-29~120
MAJOR MATERIAL	ASTM A216 WCB

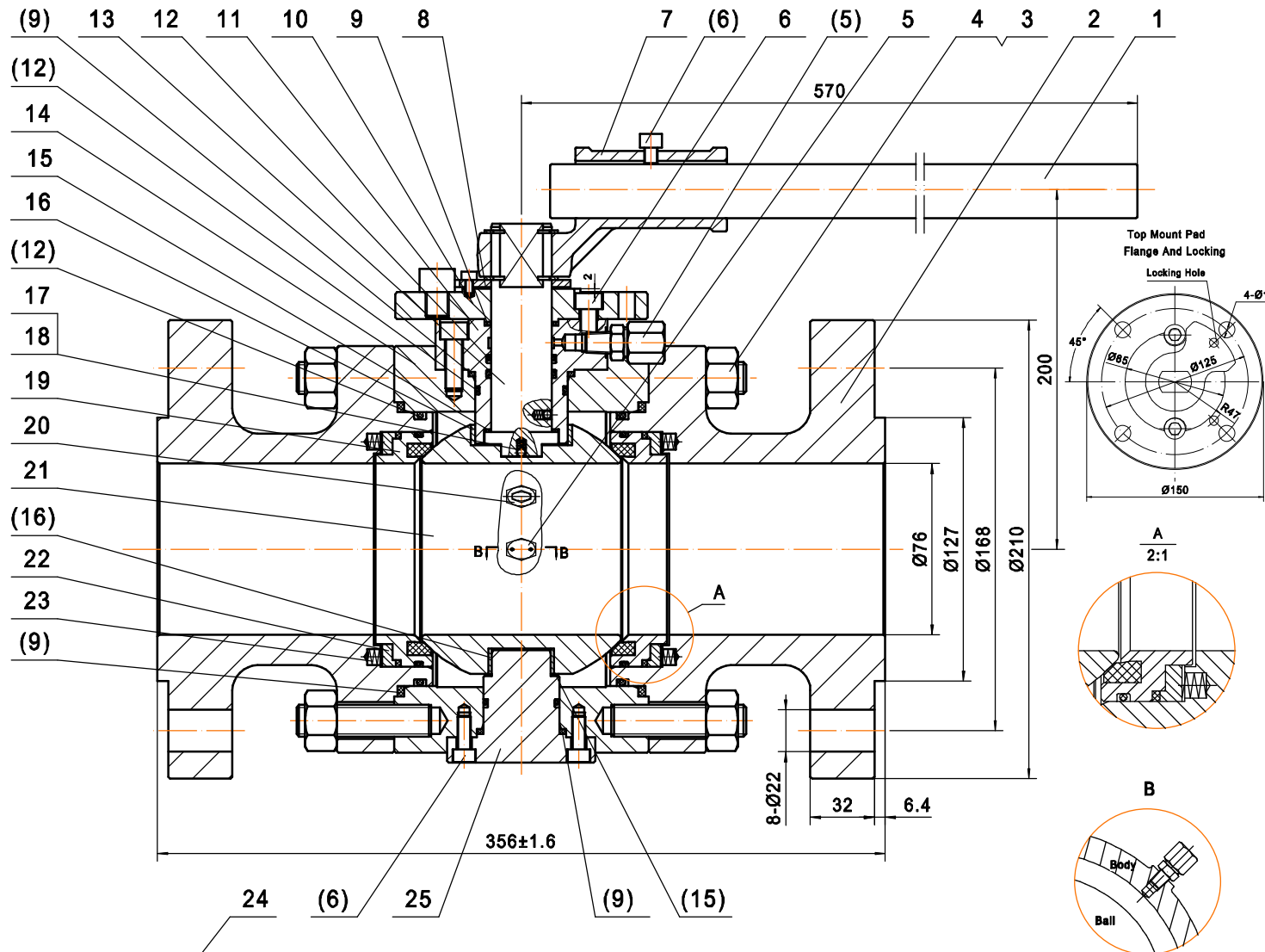
2P Ball Valve 8" 600LB, A216 WCB, Trim 316SS		MODEL/PART NO.	FS9000- FTCA1523AAACB	APPROVED	B.T.
		DATE:	10-07-2015	CHECKED	S.Q.
Australian Pipeline Valve		REV:	01	DRAWN	C.C.



Firesafe Certified
API 607 6th Edition,
API 6FA 3rd Edition



AUSTRALIAN PIPELINE VALVE®
www.australianpipelinevalve.com.au



BILL OF MATERIALS:

ITEM	PART NAME	MATERIAL
1	Handle	ASTM A36 +ZP
2	Bonnet	ASTM A182 F51
3	Bolt	ASTM A193 B8M + XYLAN
4	Nut	ASTM A194 8M + XYLAN
5	Sealant Injection	ASTM A182 F51
6	Bolt	ASTM A193 B8M + XYLAN
7	Lever	ASTM A216 WCB
8	Stopper	ASTM A276 316
9	Sealing Ring	Flexible Gr.+316SS Wire
10	Flange	ASTM A182 F51
11	Gland	ASTM A182 F51
12	O-Ring	Viton AED
13	Stem	ASTM A182 F51
14	Body	ASTM A182 F51
15	Washer	PTFE
16	Sliding Bearing	316+PTFE
17	Spring (Antistatic)	INC X-750
18	Small Ball (Antistatic)	SS316
19	Seat	ASTM A182 F51+CPTFE
20	Vent Valve	ASTM A182 F51
21	Ball	ASTM A182 F51
22	Washer	ASTM A182 F51
23	Spring	INC X-750
24	Plug	ASTM A182 F51
25	Trunnion	ASTM A182 F51

PERFORMANCE SPECS:

		CLASS Lb	600		
Test Pressure	Shell Test	15.3	MPa		
	Sealing Test	11.2			
	Air Sealing Test	0.6			
Temperature °C				-29-200	

Technical Requirements:

- 1 Design manufacture acc. to API 6D/API 608
- 2 Face to face acc. to ANSI B16.10
- 3 End flanges acc. to ANSI B16.5
- 4 Pressure-temperature norm acc. to ANSI B16.34.
- 5 Inspection and test acc. to API 598.
- 6 Firesafe certified API 607 6th Edition and API 6FA 3rd Edition.
- 7 Top mount acc. to ISO 5211.
- 8 Antistatic BS5351.
- 9 Materials comply with NACE MR-0175

APV MODEL NO:
BV100-FTCH2323EAEDE

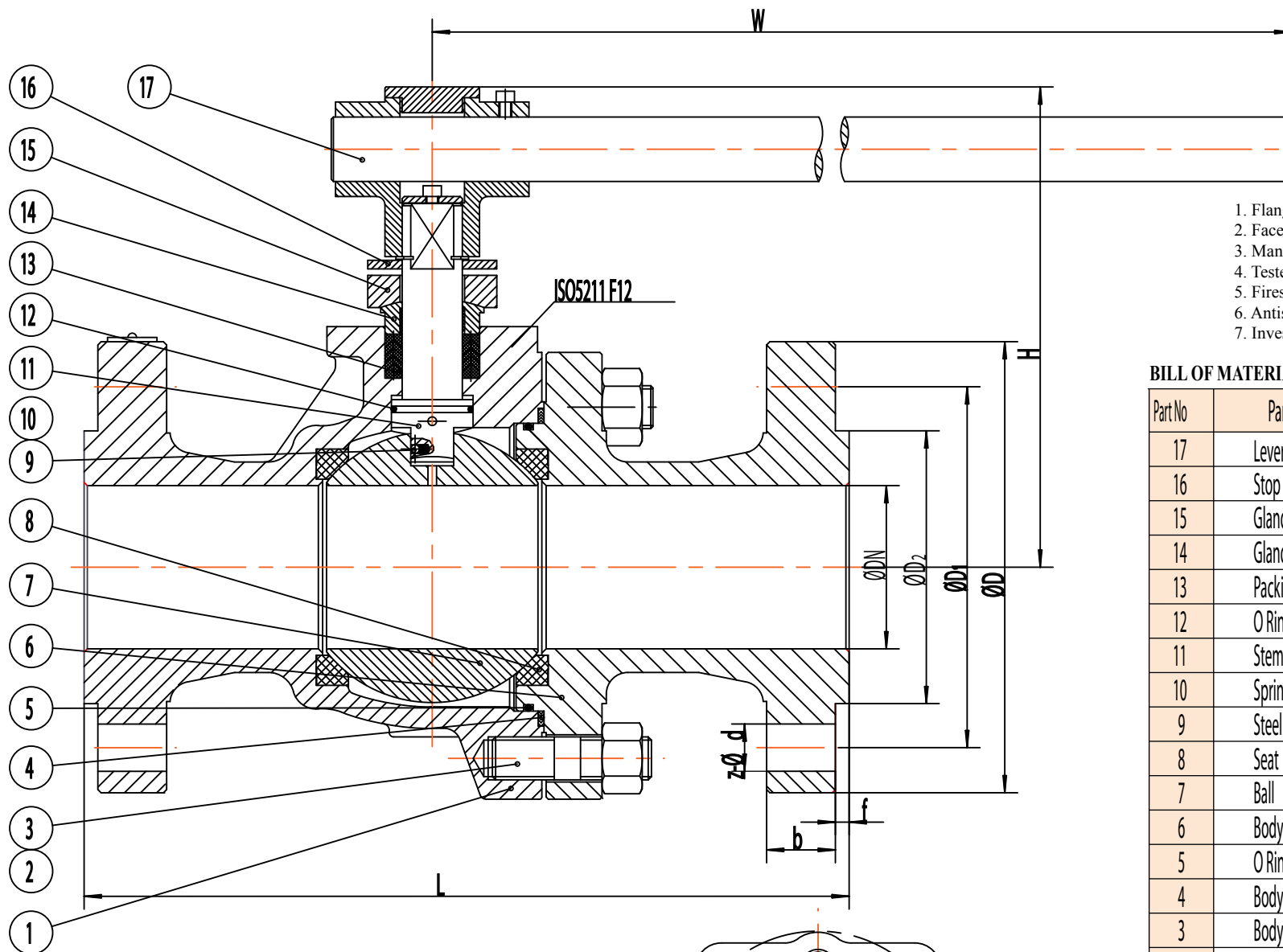
Trunnion Ball Valve 3" 600LB	ORDER NO.	503539BT	APPROVED	B.T.
Australian Pipeline Valve	DATE:	13-05-2009	CHECKED	S.Q.
	REV:	01	DRAWN	C.C.



Firesafe Certified
API 607 6th Edition,
API 6FA 3rd Edition



**AUSTRALIAN
PIPELINE VALVE**
www.australianpipelinevalve.com.au



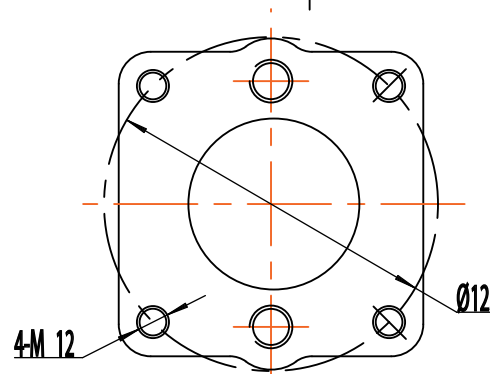
1. Flange dimensions to ANSI B16.5
2. Face to Face dimensions to ANSI B16.10
3. Manufacture in accordance with API608 & API6D
4. Tested to API598
5. Firesafe certified API607 6th edition, API6FA 3rd edition
6. Antistatic BS5351
7. Investment Cast

BILL OF MATERIALS:

Part No	Parts Name	Materials
17	Lever	Carbon Steel+Plated Zinc
16	Stop Collar	Carbon Steel+Plated Zinc
15	Gland Flange	ASTM A216 WCB
14	Gland	ASTM A182 F316
13	Packing	Graphite
12	O Ring	Viton AED
11	Stem	ASTM A182 F316
10	Spring	SS316
9	Steel Ball	SS316
8	Seat	RPTFE
7	Ball	ASTM A182 F316
6	Body Cap	ASTM A216 WCB
5	O Ring	Viton AED
4	Body Seal	SS316+Graphite
3	Body Stud Nut	ASTM A194 2H +ZP
2	Body Stud	ASTM A193 B7 +ZP
1	Body	ASTM A216 WCB

DIMENSIONS:

ITEM	Class	NPS	Dimensions									
			L	DN	D	D ₁	D ₂	b	f	Z-Ød	W	H
161	600	4	432	100	273	216	157	38	6.4	8-25	650	268



APV MODEL NO:
SLFSBV01-CB1AHAABA3V

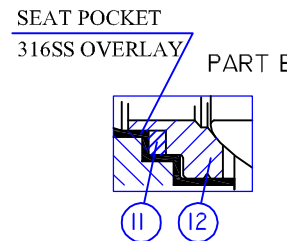
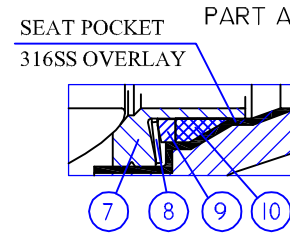
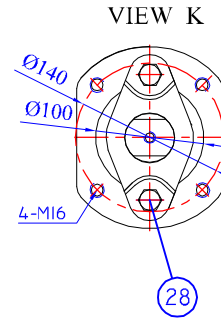
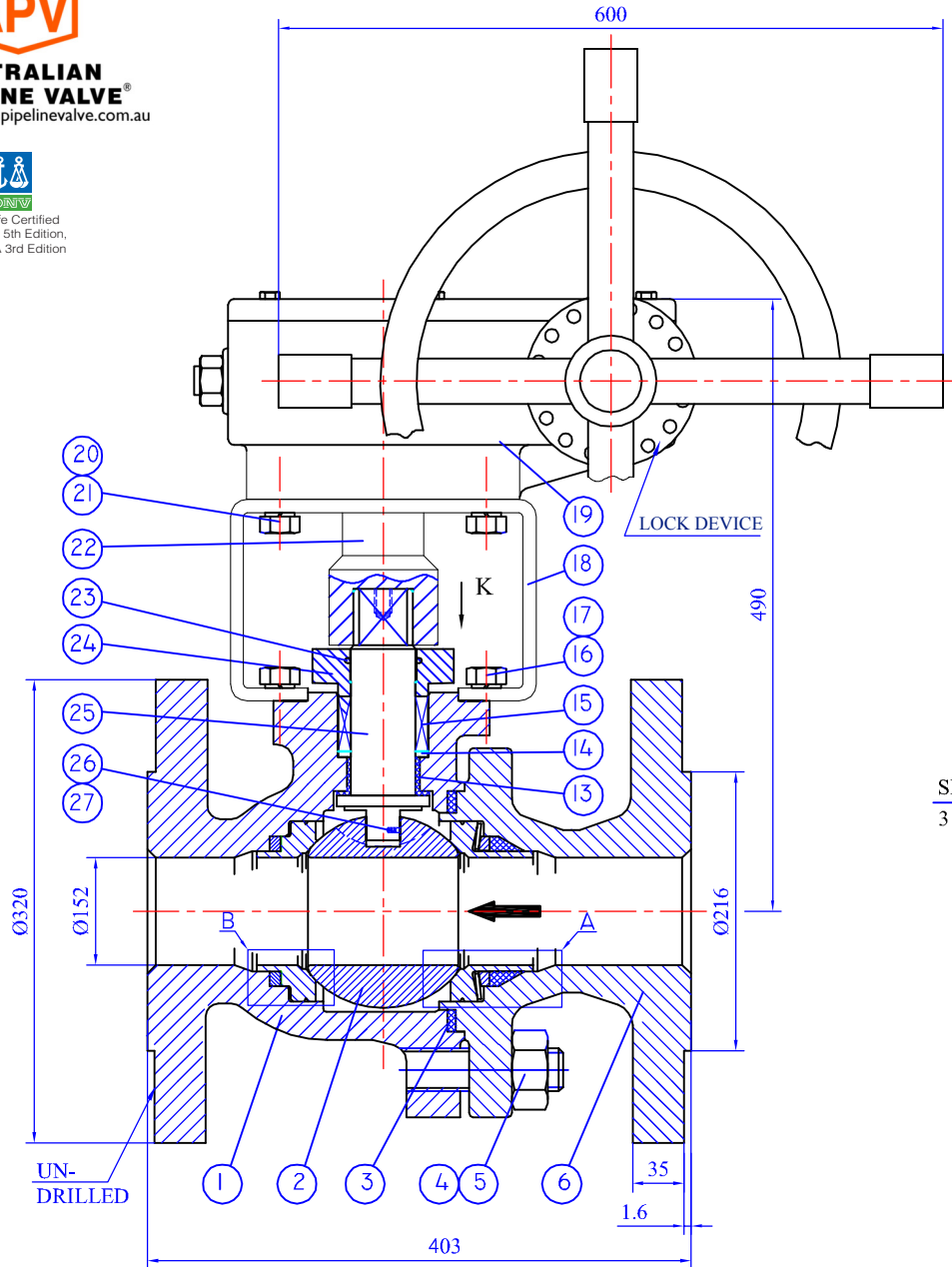
Ball Valve NPS4 Class 600	ORDER NO.	503540BT	APPROVED	B.T.
Australian Pipeline Valve	DATE:	-	CHECKED	S.Q.
	REV:	01	DRAWN	C.C.



AUSTRALIAN PIPELINE VALVE®
www.australianpipelinevalve.com.au



Firesafe Certified
API 607 5th Edition,
API 6FA 3rd Edition



BILL OF MATERIALS:

NO.	PART NAME	MATERIAL
1	BODY	A216 WCB+316SP
2	BALL	A182 F316+STL6#
3	GASKET	316SS+GRAPHITE
4	STUD	A193 B7 + ZP
5	NUT	A194 2H + ZP
6	BODY CAP	A216 WCB+316 SP
7	LEFT SEAT	A182 F316+STL6#
8	PLATE SPRING	INCONEL X-750
9	BACKUP RING	A276 316L
10	SEAT BACKING	GRAPHITE
11	SEAT PACKING	GRAPHITE
12	RIGHT SEAT	A182 F316+STL6#
13	THRUST&STEM BEARING	GRAPHITE
14	WASHER	A276 316
15	STEM PACKING	GRAPHITE
16	BOLT	C.S.+Zn
17	WAVE WASHER	C.S.+Zn
18	BRACKET	C.S. + ZP+ PLASTIC
19	G.O.	ASSEMBLY
20	BOLT	C.S.+Zn
21	FLEXIBLE WASHER	C.S.+Zn
22	CONNECTOR	C.S. + ZP
23	ANTI STATIC SPRING	A276 316
24	GLAND FLANGE	A351 CF8
25	STEM	329SS+CC
26	ANTI STATIC SPRING	A276 316
27	ANTI STATIC BALL	A276 316
28	GLAND BOLT	A193 B8

DESIGN: ANSI B16.34, API 608
FACE TO FACE DIMENSION: ANSI B16.10
END FLANGE DIMENSION: ANSI B16.5 RF
INSPECTION: CLASS VI SHUT OFF TO MSS SP61
FIRE SAFE: API 607, 6FA
BI-DIRECTIONAL FLOW

DIMENSIONS IN: MM

SIZE & CLASS	ITEM	APV MODEL NUMBER	REMARKS
6"- CLASS 300	278	SLFSBV01-MS-FFBA1B7136ILABD	NACE MR0175

Metal Seated Floating Ball Valve		DRAWING NO.	ADM-2064	APPROVED	B.T.
Australian Pipeline Valve		DATE:	-	CHECKED	S.Q.
		REV:	01	DRAWN	C.C.



API6FA 3rd Edition
API 607 5th & 6th
ISO10497



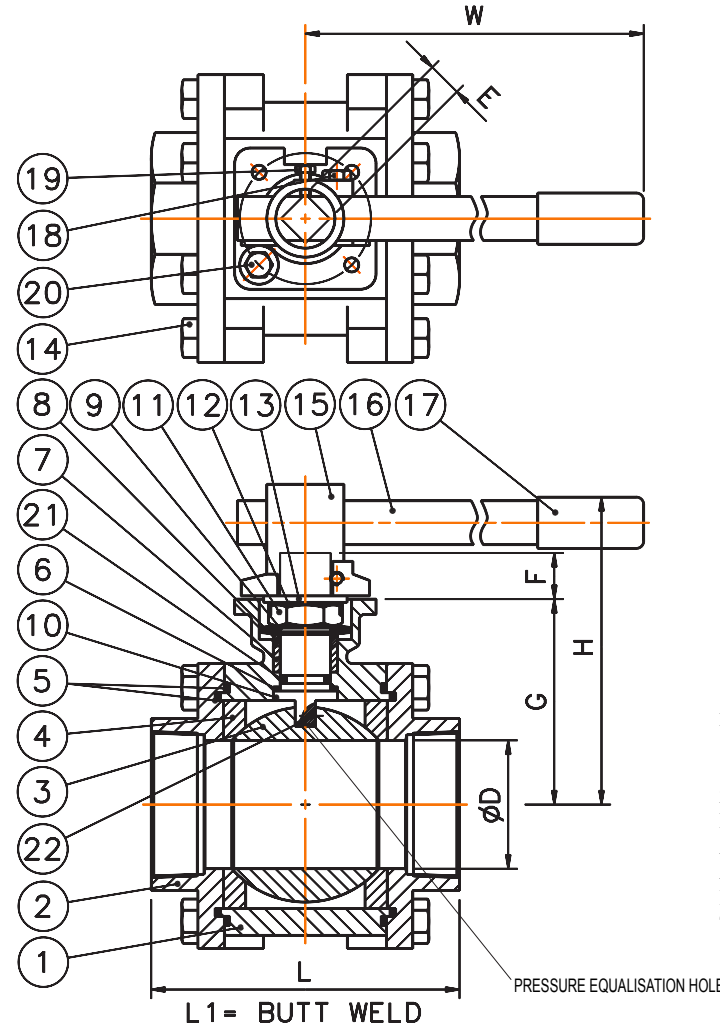
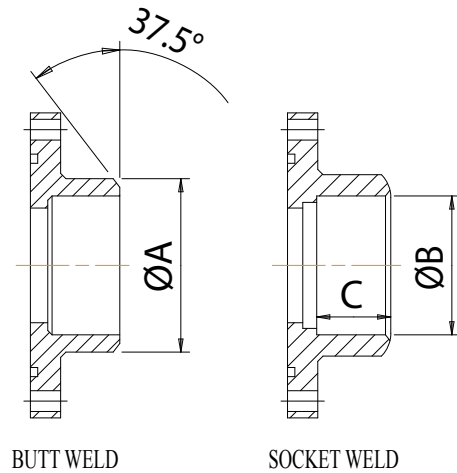
ISO 15848-1 Class CO2
Fugitive Emission Certified



AS 4617, AS 4629



AUSTRALIAN PIPELINE VALVE®
www.australianpipelinevalve.com.au

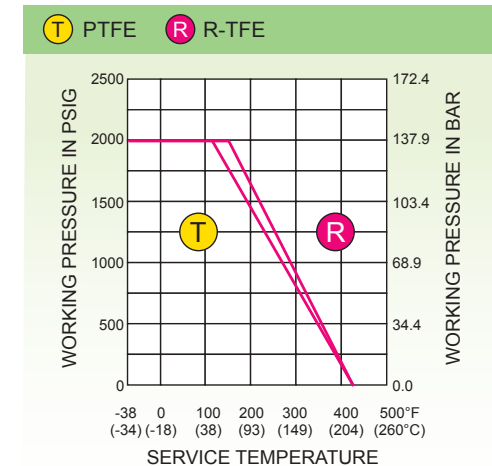


BILL OF MATERIALS:

ITEM	DESCRIPTION	STAINLESS STEEL	CARBON STEEL	Q'TY
1	BODY	ASTM A351 CF8M	ASTM A216 WCB	1
2	BODY CAP	ASTM A351 CF8M	ASTM A216 WCB	2
3	BALL	ASTM A351 CF8M/316	ASTM A351 CF8/304	1
4	SEAT	PTFE / R-TFE	PTFE / R-TFE	2
5-1	BODY GASKET	GRAPHITE	GRAPHITE	2
5-2		PTFE	PTFE	2
6-1	THRUST WASHER	GRAPHITE	GRAPHITE	1
6-2		PTFE	PTFE	1
7	STEM PACKING	GRAPHITE	GRAPHITE	2
8	GLAND	AISI 304	AISI 304	1
9	BELLEVILLE WASHER	AISI 301	AISI 301	2
10	STEM	ASTM A276 316	ASTM A276 304	1
11	GLAND NUT	AISI 304	AISI 304	1
12	LOCK CLIP	AISI 304	AISI 304	1
13	FLAT WASHER	AISI 304	AISI 304	1
14	BODY BOLT	ASTM A193 B8	ASTM A193 B7	12-16
15	HANDLE PIPE	ASTM A351 CF8	CARBON STEEL	1
16	SPEEL PIPE	AISI 304	CARBON STEEL	1
17	SLEEVE	VINYL PLASTISOL	VINYL PLASTISOL	1
18	FIXING SCREW (PIPE)	AISI 304	CARBON STEEL	1
19	FIXING SCREW (STEM)	AISI 304	CARBON STEEL	1
20	STOP PIN	AISI 304	CARBON STEEL	1
21	STEM O-Ring	VITON	CARBON STEEL	1
22	ANTI-STATIC DEVICE	AISI 316	AISI 316	1

NOTES:
Solid Ball
800 ANSI Class
2000 PSI Full Port
Firesafe API 607 5th Edition and
API6FA 3rd Edition
Antistatic BS5351
ISO 5211 Actuator Mounting Pad
TA LUFT 2002

P-T RATINGS



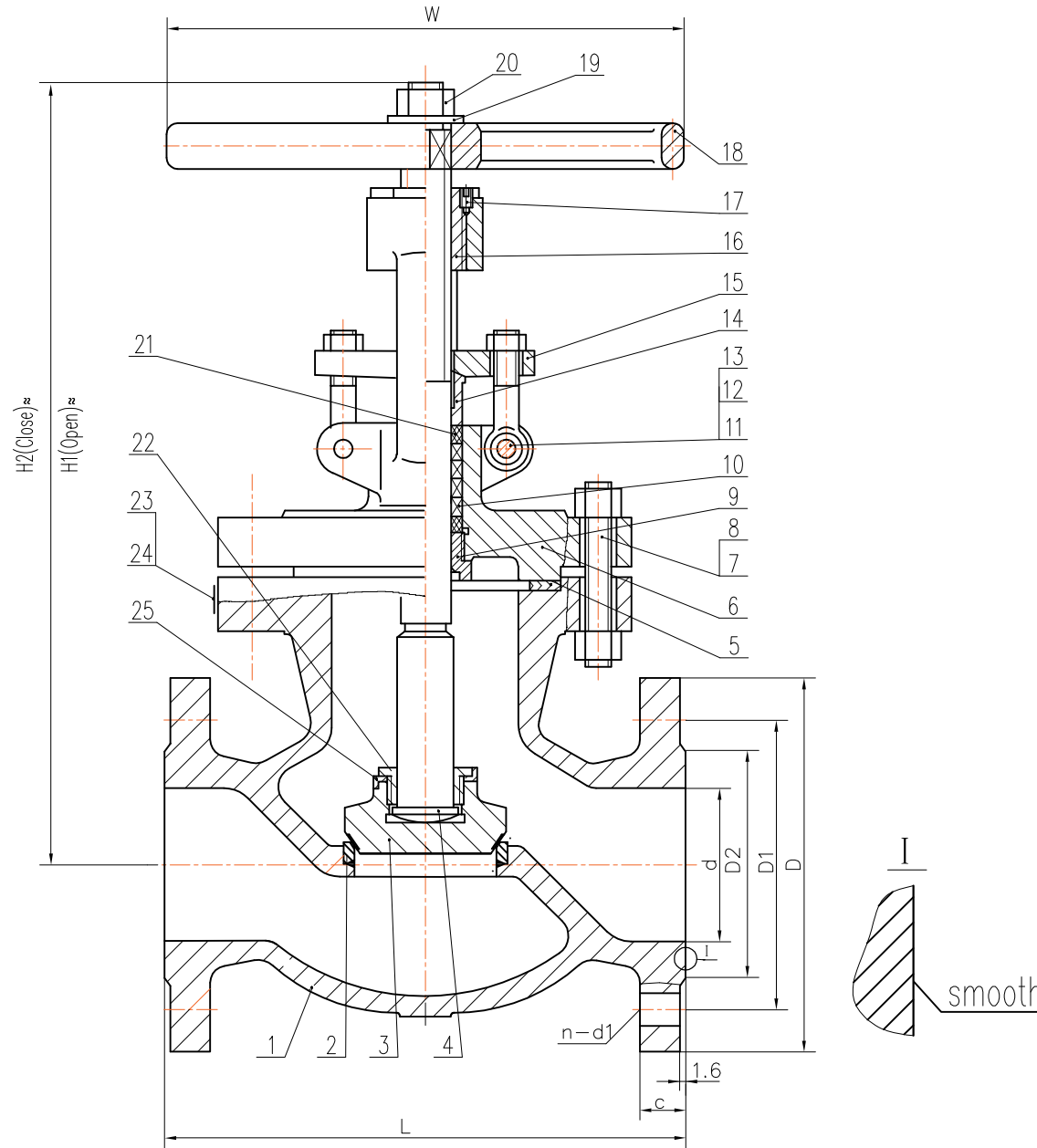
DIMENSIONS:

SIZE		ØD		L		L1		E		F		G		H		W		ØA		ØB		C		ISO 5211 (F)	Weights KG
IN	DN	IN	MM	IN	MM	IN	MM	IN	MM	IN	MM	IN	MM	IN	MM	IN	MM	IN	MM	IN	MM	IN	MM		
2-1/2"	65	2.56	65	7.28	185	7.48	190	0.87	22	0.94	24	4.59	116.5	6.81	173	18.11	460	3.00	76.3	2.91	73.9	0.67	17	F07-F10	13.4
3"	80	3.15	80	8.07	205	8.66	220	0.87	22	0.94	24	5.00	127.0	7.24	184	18.11	460	3.51	89.1	3.54	89.8	0.67	17	F07-F10	21.0
4"	100	3.94	100	9.44	240	10.62	270	1.06	27	1.14	29	6.26	159.0	9.53	242	23.62	600	4.50	114.3	4.54	115.2	0.79	20	F10	34.4

Firesafe Ball Valve 800 Class	DWG NO.	BV100-65~100	APPROVED	B.T.
	DATE:	18-05-2017	CHECKED	C.C.
	REV:	01	DRAWN	S.Q.
Australian Pipeline Valve				



AUSTRALIAN PIPELINE VALVE®
www.australianpipelinevalve.com.au



DIMENSIONS:

8"	495	343	298.5	270	28.5	203	8-ø22	400	552	616	141.3
NPS	L	D	D1	D2	c	d	n-d1	W	H2	H1	WT. kg

BILL OF MATERIALS:

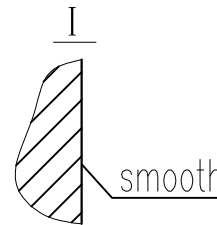
No.	Part Name	Material	No.	Part Name	Material
			13	Pin	C.S.
25	Washer	304ss	12	Nut	ASTM A194 2H
24	Rivet	Bronze	11	Eyebolt	ASTM A193 B7
23	Nameplate	304SS	10	Packing	Flexible Graphite
22	Disc Cover	ASTM A276 410	9	Back seat	ASTM 276 410
21	Packing	Braided Graphite	8	Nut	ASTM A194 2H
20	Nut	C.S.	7	Bolt	ASTM A193 B7
19	Washer	C.S.	6	Bonnet	ASTM A216 WCB
18	Handwheel	Malleable Iron	5	Gasket	304 Jacketed Graphite
17	Screw	304ss	4	Stem	ASTM A182 F6a
16	Stem Nut	Aluminium Bronze	3	Disc	ASTM A216 WCB+13Cr
15	Gland flange	ASTM A216 WCB	2	Seat	ASTM A105+STL No.6
14	Gland	ASTM A276 410	1	Body	ASTM A216 WCB

TECHNICAL PERFORMANCE:

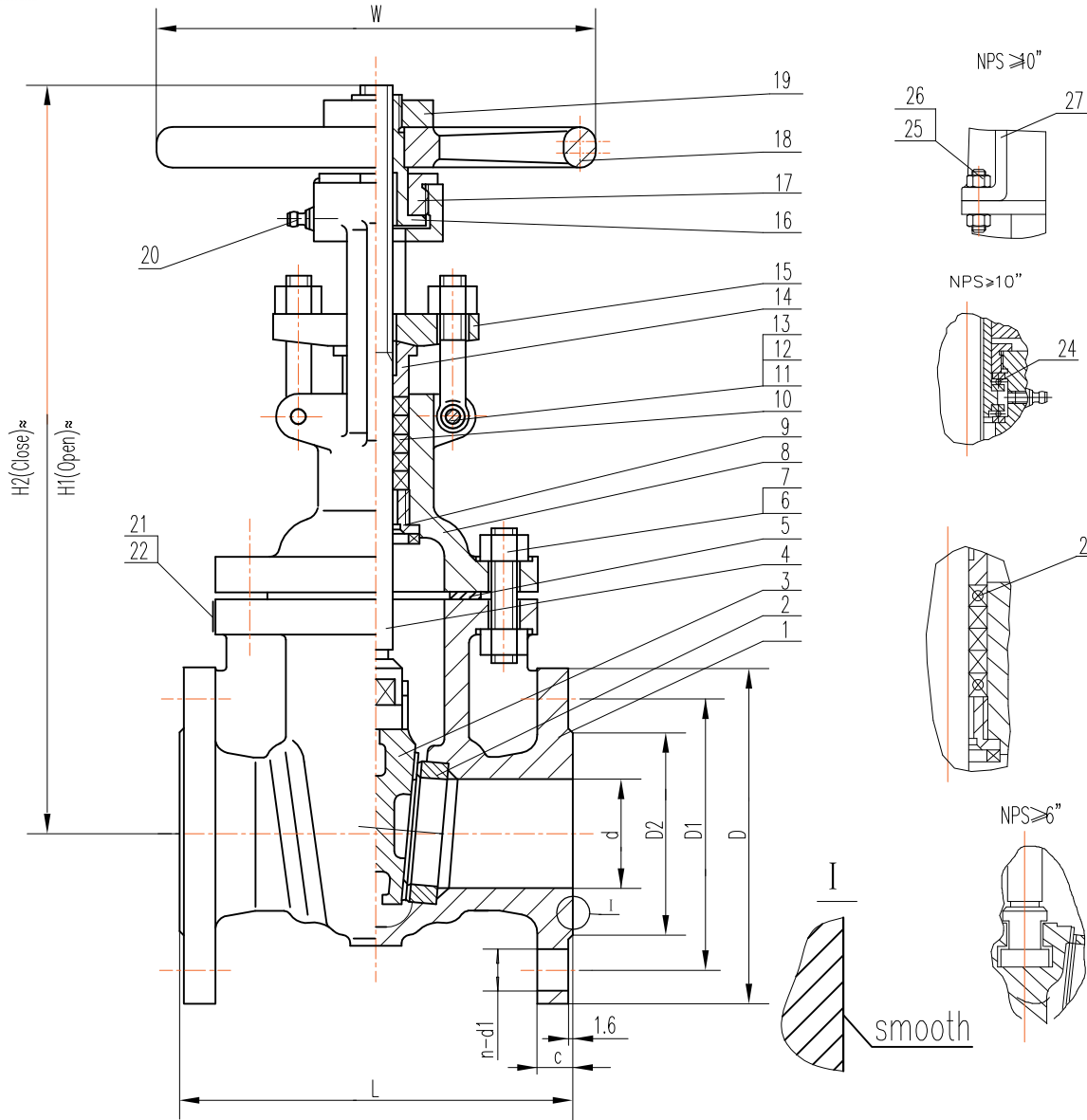
NOMINAL DIAMETER	8"(DN200)
NOMINAL PRESSURE	150Lb(PN2.0MPa)
SHELL TEST PRESSURE	3.1 MPa
SEAL TEST PRESSURE	2.3 MPa
AIRTIGHT TEST PRESSURE	0.6 MPa
SUITABLE TEMPERATURE	-29~425
SUITABLE MEDIUM	W. O. G
BODY MATERIAL	ASTM A216 WCB

NOTES:

1. Design and Manufacture: B16.34 / API 600
2. Face-to-Face: ASME B16.10
3. Connection End: ASME B16.5
4. Inspection and Test: API 598
5. Other requirement according to valve specification sheets



Globe Valve 8" (DN200), ANSI 150LB Australian Pipeline Valve	DRAWING NO.	MAJ1F021C	APPROVED	B.T.
	DATE:	14-05-2008	CHECKED	S.Q.
	REV:	01	DRAWN	C.C.



BILL OF MATERIALS:

No.	Part Name	Material	No.	Part Name	Material
			14	Gland	ASTM A276 410
27	Yoke	ASTM A216 WCB	13	Nut	ASTM A194 2H
26	Nut	ASTM A194 2H	12	Eyebolt	ASTM A193 B7
25	Stud	ASTM A193 B7	11	Pin	C.S.
24	Bearing	Assembly	10	Packing	Flexible Graphite
23	Packing	Braided Graphite	9	Back seat	ASTM A276 410
22	Rivet	Bronze	8	Bonnet	ASTM A216 WCB
21	Nameplate	304SS	7	Nut	ASTM A194 2H
20	Lubricator	Assembly	6	Stud	ASTM A193 B7
19	Retaining nut	C.S.	5	Gasket	304 Jacketed Graphite
18	Handwheel	Malleable Iron	4	Stem	ASTM A182 F6a
17	Nut	C.S.	3	Wedge	ASTM A216 WCB+13Cr
16	Stem Nut	Aluminium Bronze	2	Seat ring	ASTM A105+STL
15	Gland flange	ASTM A216 WCB	1	Body	ASTM A216 WCB

TECHNICAL PERFORMANCE:

NOMINAL DIAMETER	2"~14"(DN50~350)
NOMINAL PRESSURE	150Lb(PN2.0MPa)
SHELL TEST PRESSURE	3.1 MPa
SEAL TEST PRESSURE	2.3 MPa
AIRTIGHT TEST PRESSURE	0.6 MPa
SUITABLE TEMPERATURE	-29~425
SUITABLE MEDIUM	W. O. G
BODY MATERIAL	ASTM A216 WCB

NOTES:

1. Design and Manufacture: API 600
2. Face-to-Face: ASME B16.10
3. Connection End: ASME B16.5
4. Inspection and Test: API 598
5. Other requirement according to valve specification sheets

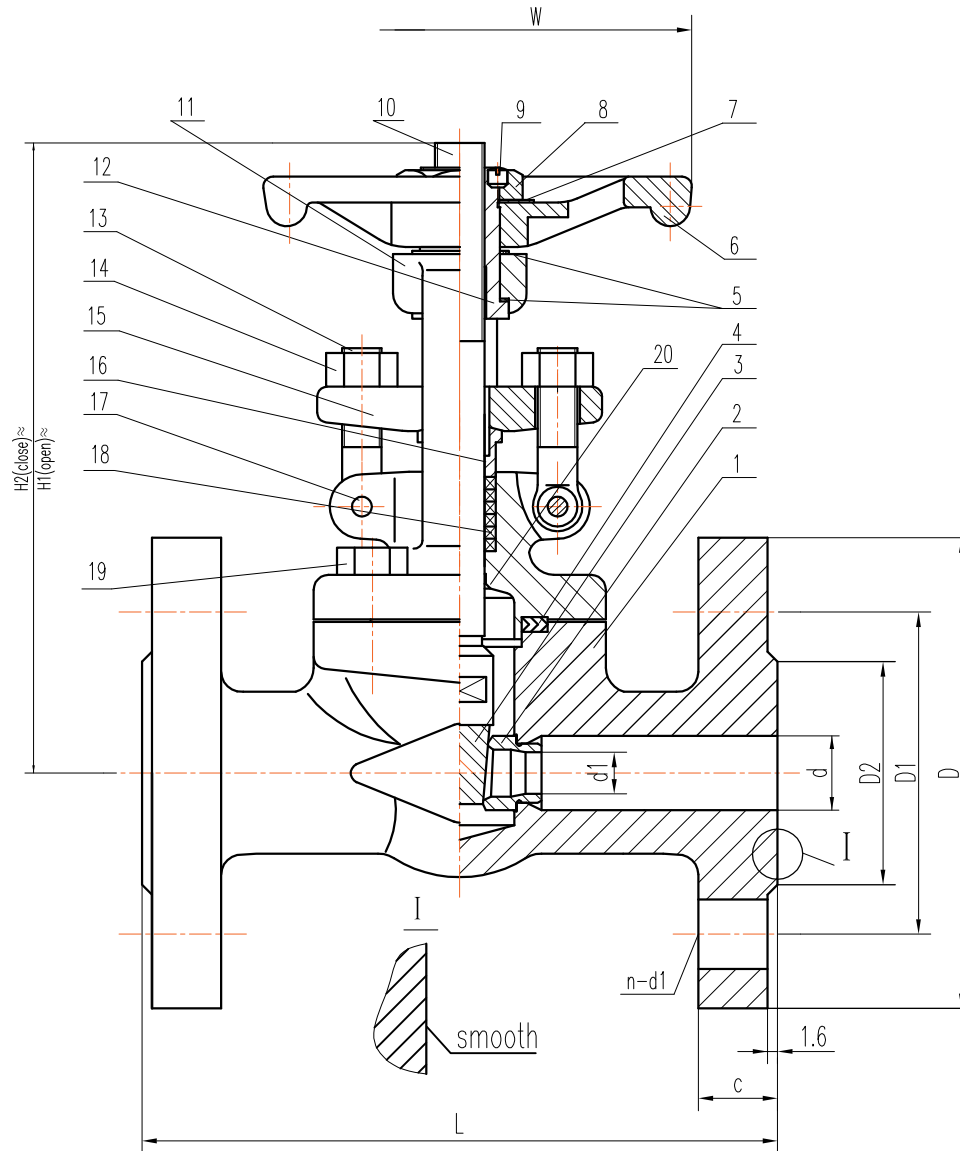
DIMENSIONS:

14"	381	533	476	413	35	337	12-ø29	500	1150	1550	355
12"	356	483	432	381	32	305	12-ø25	450	1056	1416	285
6"	267	279	241.5	216	25.4	152	8-ø22	300	626	794	72.5
3"	203	190	152.5	127	19.0	76	4-ø19	250	428	517	30.4
2"	178	152	120.5	92	15.8	51	4-ø19	200	343	406	18.3
NPS	L	D	D1	D2	c	d	n-d1	W	H2	H1	WT. kg

Gate Valve 2"~14" (DN50-350), ANSI 150LB	DRAWING NO.	MAZ1F021C	APPROVED	B.T.
Australian Pipeline Valve	DATE:	05-05-2008	CHECKED	S.Q.
	REV:	01	DRAWN	C.C.



AUSTRALIAN PIPELINE VALVE®
www.australianpipelinevalve.com.au



BILL OF MATERIALS:

No.	Part Name	Material	No.	Part Name	Material
20	Basket	410SS	10	Stem	ASTM A182 F6a
19	Bolt	ASTM A193 B7	9	Screw	C.S
18	Packing	Flexible Graphite	8	Lock Nut	C.S
17	Pin	ASTM A276 410	7	Nameplate	304SS
16	Gland	ASTM A276 410	6	Handwheel	Malleable Iron
15	Gland Flange	ASTM A105	5	Washer	ASTM A276 410
14	Nut	ASTM A194 2H	4	Gasket	316 Spiral Wound W/Graphite
13	Gland Bolt	ASTM A193 B7	3	Wedge	ASTM A182 F6a
12	Stem Nut	Aluminium Bronze	2	Seat	ASTM A105+STL
11	Bonnet	ASTM A105	1	Body	ASTM A105

TECHNICAL PERFORMANCE:

NOMINAL DIAMETER	1-1/2"(DN40)
NOMINAL PRESSURE	150Lb(PN2.0MPa)
SHELL TEST PRESSURE	2.9 MPa
SEAL TEST PRESSURE	2.1 MPa
AIR TEST PRESSURE	0.6 MPa
SUITABLE TEMPERATURE	
SUITABLE MEDIUM	
BODY MATERIAL	ASTM A105

NOTES:

1. Design and Manufacture: API 602
2. Face-to-Face: ASME B16.10
3. Connection End: ASME B16.5
4. Inspection and Test: API 598
5. Other requirement according to valve specification sheets

DIMENSIONS:

1-1/2"	165	127	98.5	73	28.6	38	14	4-ø15	160	236	206	12.5
NPS	L	D	D1	D2	d1	d	c	n-d1	W	H1	H2	WT.kg

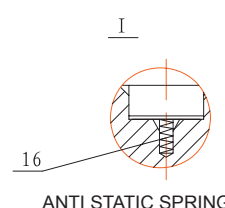
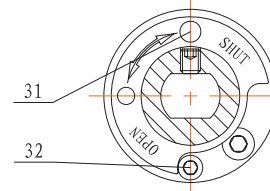
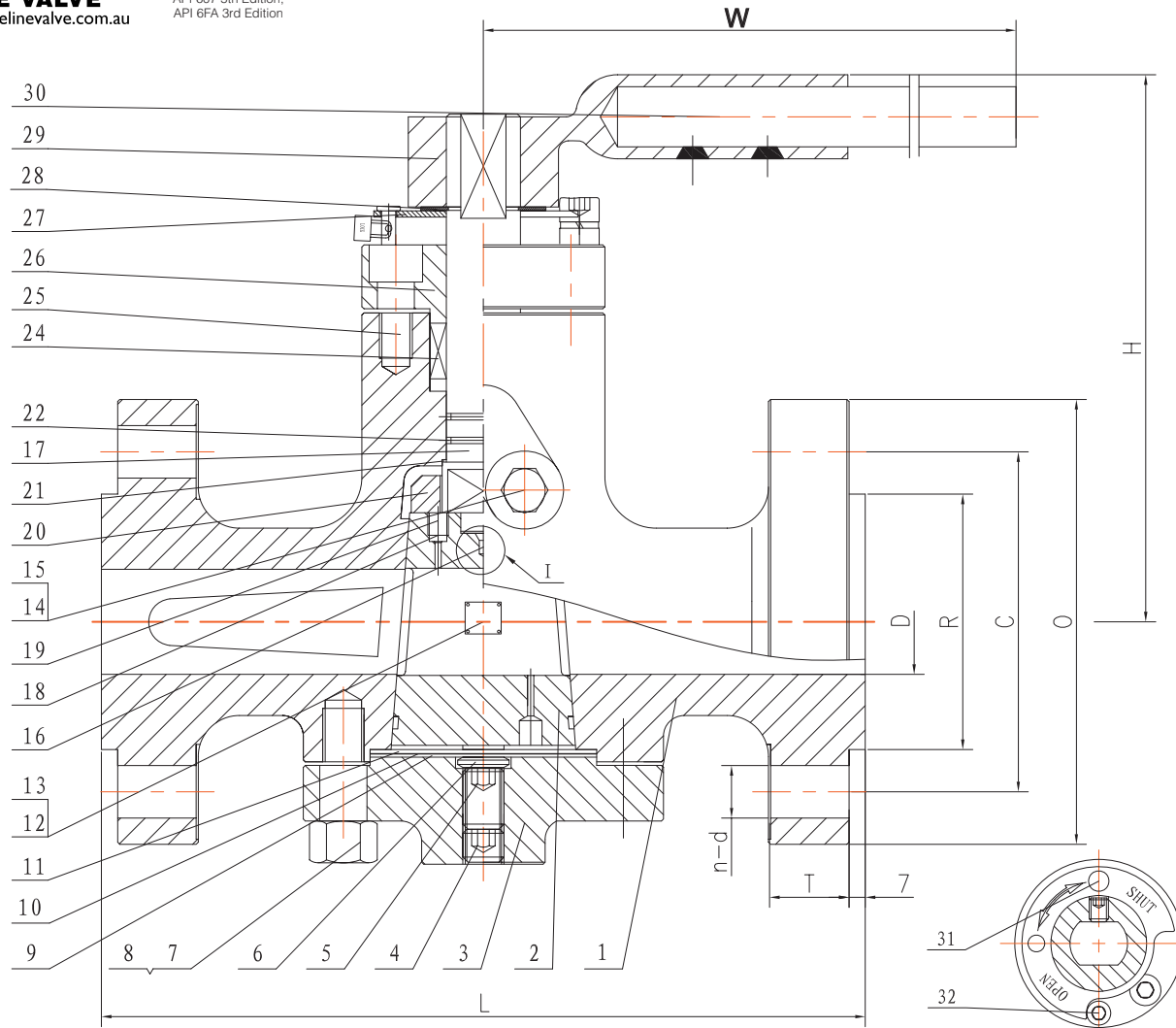
Gate Valve 1-1/2" (DN40), ANSI 150LB	ORDER NO.	502670BT	APPROVED	B.T.
Australian Pipeline Valve	DATE:	09-05-2008	CHECKED	S.Q.
	REV:	01	DRAWN	C.C.



AUSTRALIAN PIPELINE VALVE®
www.australianpipelinevalve.com.au



Firesafe Certified
API 607 5th Edition,
API 6FA 3rd Edition



BILL OF MATERIALS:

ITEM	NAME	MATERIAL
1	BODY	A216 WCC
2	PLUG	CA15
3	LOWER COVER	A105
4	LOCKING SCREW	CS
5	SCREW	CS
6	ADJUSTABLE BLOCK	CS
7	STUD	A193 B7M+Zn
8	NUT	A194 2HM+Zn
9	PLATE	A36
10	GASKET	A276 304
11	GRAPHITE GASKET	FLEXIBLE GRAPHITE+304
12	NAMEPLATE	A276 304
13	RIVET	Cu
14	ONE WAY VALVE	SS316
15	SEALANT INJECTION VALVE	SS316
16	SPRING	A276 304
17	STEM	A182 F6A
18	STEEL BALL	A276 304
19	PLUG COVER	SS
20	JOINT	AISI 4135
21	GASKET	PTFE
22	O-RING	VITON AED
24	PACKING	FLEXIBLE GRAPHITE
25	SCREW	A193 B7M+Zn
26	UPPER COVER	A105
27	LIMIT STOP	S36
28	FLEXIBLE RETAINER	A276 304
29	LEVER HANDLE	A216 WCC
30	LEVER POLE	AISI 1020+Zn
31	LOCKING PIN	SS
32	LIMIT SCREW	SS

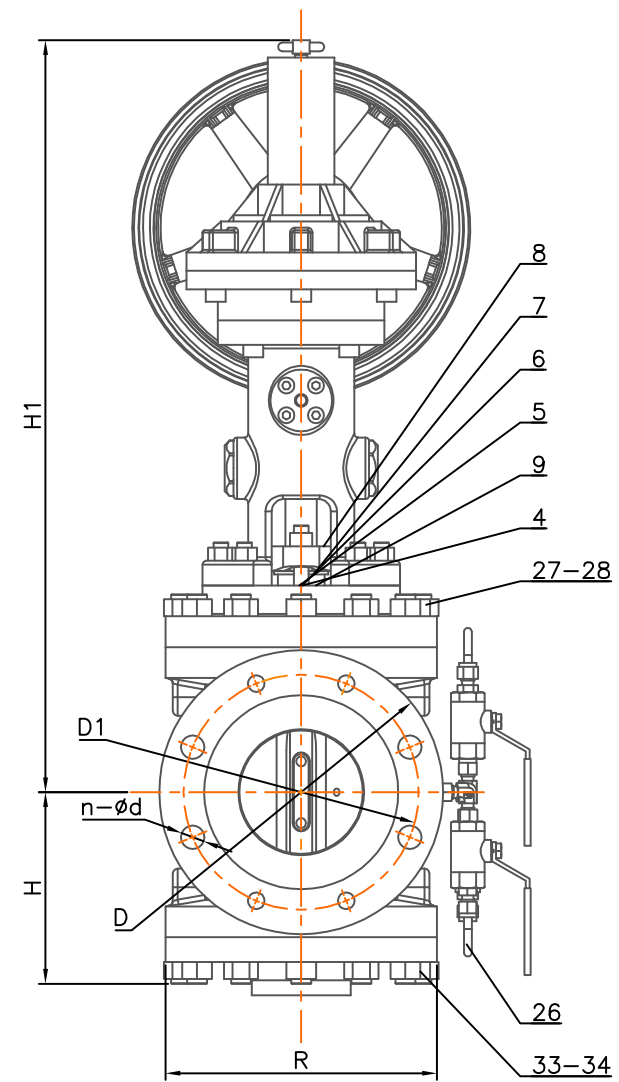
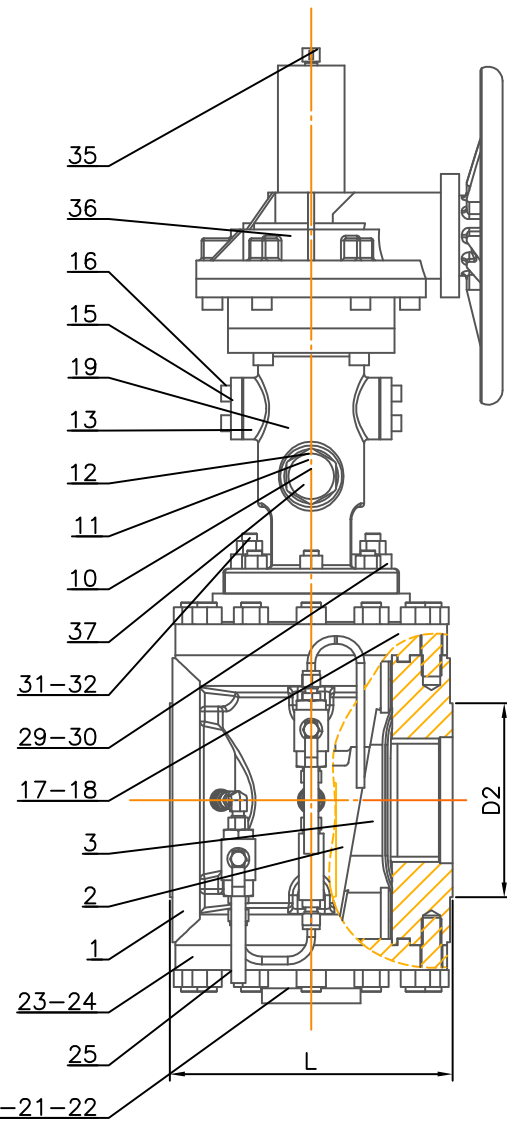
TECHNICAL SPECS:

DESIGN STD.	API 6D	END CONN.	RF
PRES. & TEMP.	ASME B16.34	PRES. TEST	API 598
FACE TO FACE	API 6D	END DIMEN.	ASME B16.5
MARKING	MSS SP-25	FIRESAFE	API607/API6FA
PAINTING	STANDARD	SPECIAL	NACE MR0175

DIMENSIONS:

ITEM	SIZE	L	D	R	C	O	T	n-d	W	H	PART NUMBER
12	2"	292	49	92.1	127	165	25.4	8-19	-	-	SSCR-RHW63WIBN

Plug Valve, 600 class Australian Pipeline Valve	DRAWING NO.	508201-PD09	APPROVED	B.T.
	DATE:	09-06-2014	CHECKED	S.Q.
	REV:	1	DRAWN	C.C.



DIMENSIONS:

Nominal Diameter		General dimensions					Flange dimensions				
IN	mm	L	H	H1	R	D	D1	D2	b	n-ød	
2"	50	178	125	270	150	152.4	120.7	92.1	14.3	4-ø19.0	
3"	80	203	140	280	195	190.5	152.4	127.0	17.5	4-ø19.0	
4"	100	229	150	315	225	228.6	190.5	157.2	22.3	8-ø19.0	
6"	150	266	215	400	270	279.4	241.3	215.9	23.9	8-ø22.2	
8"	200	292	265	460	310	342.9	298.5	269.9	27.0	8-ø22.2	
10"	250	330	315	500	340	405	362.0	323.8	28.6	12-ø25.4	
12"	300	355	340	725	415	485	431.8	381.0	30.2	12-ø25.4	
14"	350	381	390	830	530	533.4	476.3	412.8	33.4	12-ø28.6	
16"	400	406	500	975	600	595	539.8	469.9	35.0	16-ø28.6	
20"	500	864	650	1120	690	698.5	635.0	584.2	41.3	20-ø31.7	
24"	600	914	750	1250	800	812.8	749.3	692.2	46.1	20-ø34.9	
30"	403	1295	900	1375	970	*	*	*	*	*	

BILL OF MATERIALS:

NO.	PART	MATERIAL	REMARKS
37	Pin Plug	ASTM B637-718	INCONEL
36	Gear	Standard	
35	Position Indicator	Polyethylene Coated	
34	Lower Cover Nut	ASTM A194 2H	
33	Lower Cover Stud	ASTM A193 B7	
32	Nut Gland Flange	ASTM A194 2H	
31	Stud Gland Flange	ASTM A193 B7	
30	Yoke Nut	ASTM A194 2H	
29	Yoke Stud	ASTM A193 B7	
28	Cover Nut	ASTM A194 2H	
27	Cover Stud	ASTM A193 B7	
26	Bleed System	Staninless Steel	(SS-316)
25	Drain Plug	ASTM A105N	
24	Lower Gasket	SW316+Graphite	
23	Lower Cover	ASTM A105	
22	Back Stem Gasket	Graphite	
21	Back Stem	ASTM A182 F6a	
20	O-Ring	Viton	
19	Yoke	ASTM A105	
18	Upper Gasket	SW316+Graphite	
17	Upper Cover	ASTM A105	
16	Greasing Injector	Steel	
15	Cover	ASTM A105	
13	Cam Pin	ASTM B637-718	INCONEL
12	Upper Stem Pin	ASTM B637-718	INCONEL
11	Upper Stem	ASTM A564 TP 630	(17-4-PH)
10	Cam	F158 C	
9	Lower Stem Pin	ASTM B637-718	INCONEL
8	Gland Flange	ASTM A105	
7	Gland Ring	ASTM A182 F6a	
6	Packing	Graphite	
5	Backseat	ASTM A182 F6a	
4	Lower Stem	ASTM A564 TP 630	(17-4-PH)
3	Slip	A536 80-55-06 +VITON	
2	Plug	ASTM A216 WCC+ENP	
1	Body	ASTM A216 WCC+ENP	

TECHNICAL SPECS:

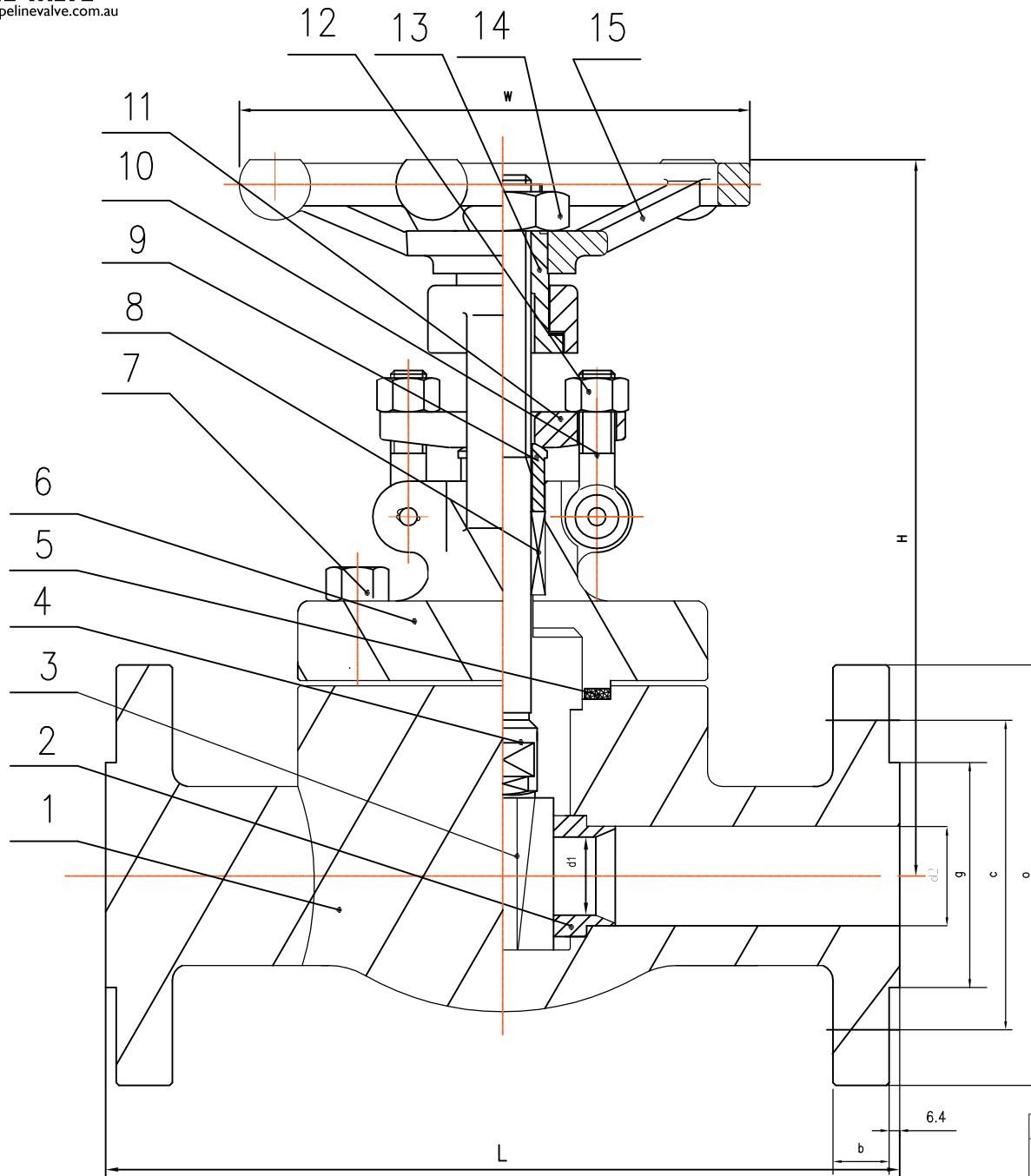
- Materials according to ASME B16.34
- Face to Face: ASME B16.10 up to 16"
- End Flange Dimensions:
Up to 24": ASME/ANSI: B16.5 RF
* 30": According to customer specifications
- Pressure-Temp: ASME/ANSI B16.34
- Pressure Test: API 598
- Epoxy painting

Double Block & Bleed Plug Valve 150 Class, RF Flanged Ends	DWG NO.	SAMPLE	APPROVED	B.T.
	DATE:	-	CHECKED	C.C.
Australian Pipeline Valve	REV:	01	DRAWN	S.Q.



STEAMCO[®]

AUSTRALIAN PIPELINE VALVE[®]
www.australianpipelinevalve.com.au

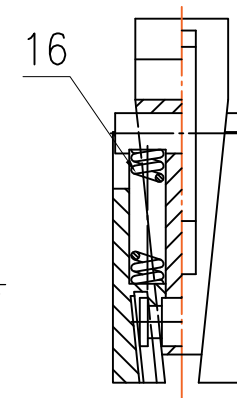


BILL OF MATERIALS:

ITEM	PART NAME	MATERIAL	ITEM	PART NAME	MATERIAL
1	Body	A105N	10	Gland	A193 B7
2	Seat ring	A182 F410+STL#6	11	Gland Flange	A105N
3	Parallel gate	A182 F410	12	Gland Nut	A194 2H
4	Stem	A182 F6	13	Yoke Nut	A276 410
5	Gasket	SS304+Graphite	14	H.W. Nut	A194 2H
6	Bonnet	A105N	15	Handwheel	KTH330-08
7	Hex Bolt	A193 B7	16	Spring	SS304
8	Packing	Flexible Graphite	17		
9	Pin	A276 410	18		

DIMENSIONS:

Item	inch	Dim	L	O	C	g	d1	d2	n-φ	H	W
218	11/2"		241	156	114.3	73	29	34		250	160



TECHNICAL SPECS:

Class		600lb	
Test Pre- ssure	Shell test	15.00	MPa
	Back seat test	11.00	
	Seat test	11.00	
	Air seat test	0.6	
Temperature range:		-29~425 °C	
Medium:		W.O.G etc	

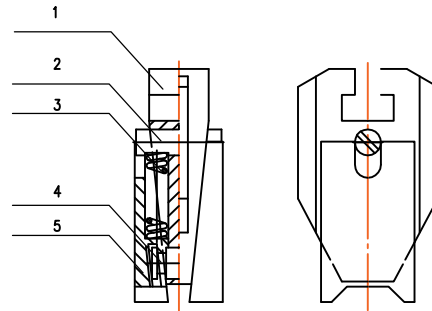
TECHNICAL REQUIREMENTS:

1. Design and manufacture conform to ANSI B16/BS5157.
2. Test and Inspection conform to API598.
3. Face to Face dimension conform to ANSI B16.10.
4. Flange dimension conform to ANSI B16.5
5. Pressure temperature ratings ANSI B16.34

Parallel Slide Gate Valve, RF	DRAWING NO.	505121BT-218	APPROVED	B.T.
Australian Pipeline Valve / Steamco	DATE:	-	CHECKED	S.Q.
	REV:	1	DRAWN	C.C.



**AUSTRALIAN
PIPELINE VALVE**
www.australianpipelinevalve.com.au



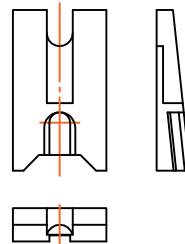
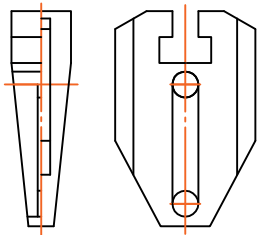
Wedge rocker die

spring

Gate

Location pin

Connecting pin



ITEM	PART NAME	MATERIAL
1	wedge rocker die	A276 F410
2	Location pin	A182 F6
3	spring	SS304
4	Connecting pin	A182 F6
5	Gate	A276 F410

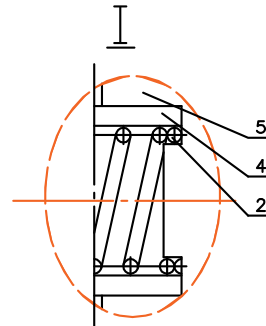
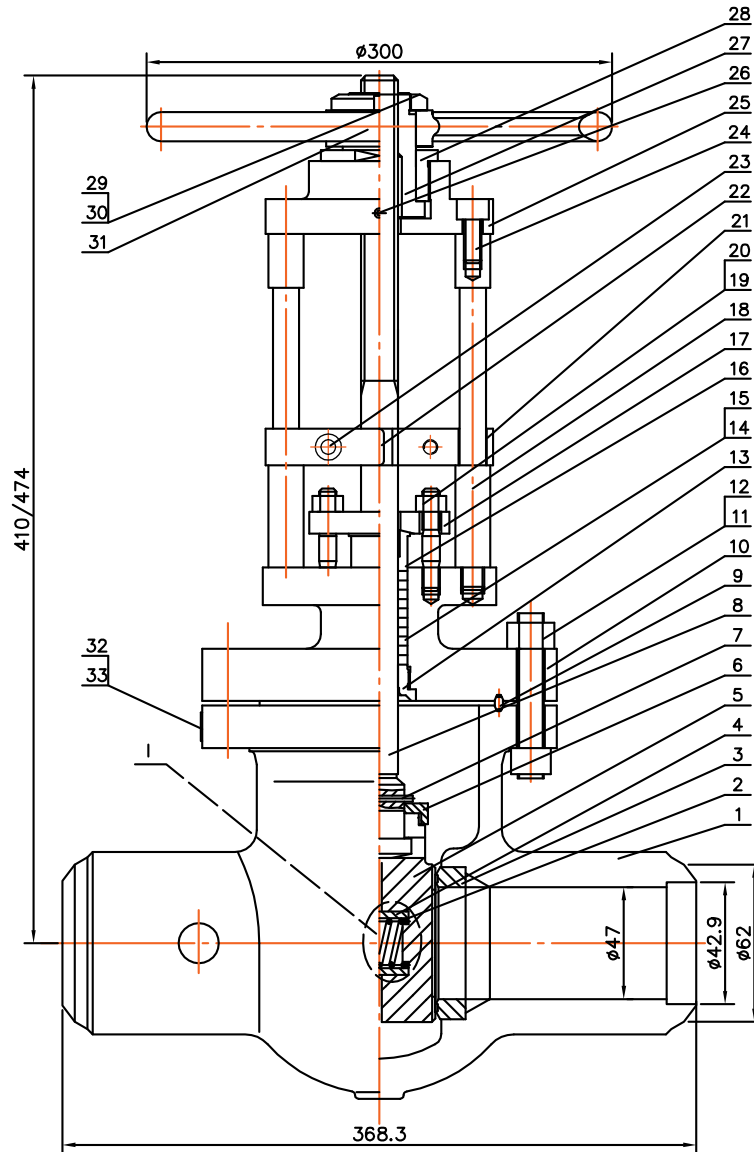
Parallel Gate Exploded View

Australian Pipeline Valve / Steamco



AUSTRALIAN PIPELINE VALVE®
www.australianpipelinevalve.com.au

STEAMCO™



BILL OF MATERIALS:

No.	Part Name	Material	No.	Part Name	Material
1	Body	WC6	18	Guiding Rod	410
2	Spring	Inconel X-750	19	Bolt	B7
3	Seat Ring	A105+STL	20	Nut	2H
4	Spring coil	316	21	Clamping Plate	1025
5	Disc	A105+STL	22	Key	1045
6	Bushing	410	23	Screw	B7
7	Pin	410	24	Screw	B7
8	Stem	410	25	Supporting Plate	1025
9	Seal Ring	Soft Steel	26	Grease Nipple	Steel
10	Bonnet	WC6	27	Stem Nut	D-2
11	Bolt	B7	28	Retaining Nut	1035
12	Nut	2H	29	Handwheel Nut	1035
13	BackSeat Ring	410	30	Screw	1035
14	Packing	Flexible Graphite	31	Handwheel	A47
15	Packing	Braided Graphite	32	Nameplate	304
16	Gland	410	33	Rivet	304
17	Gland Flange	WC6			

TECHNICAL SPECS:

Class	1500LB	
Hydrostatic	5575	PSI
Test	4080	
Air Test	80	

SPECIFICATIONS:

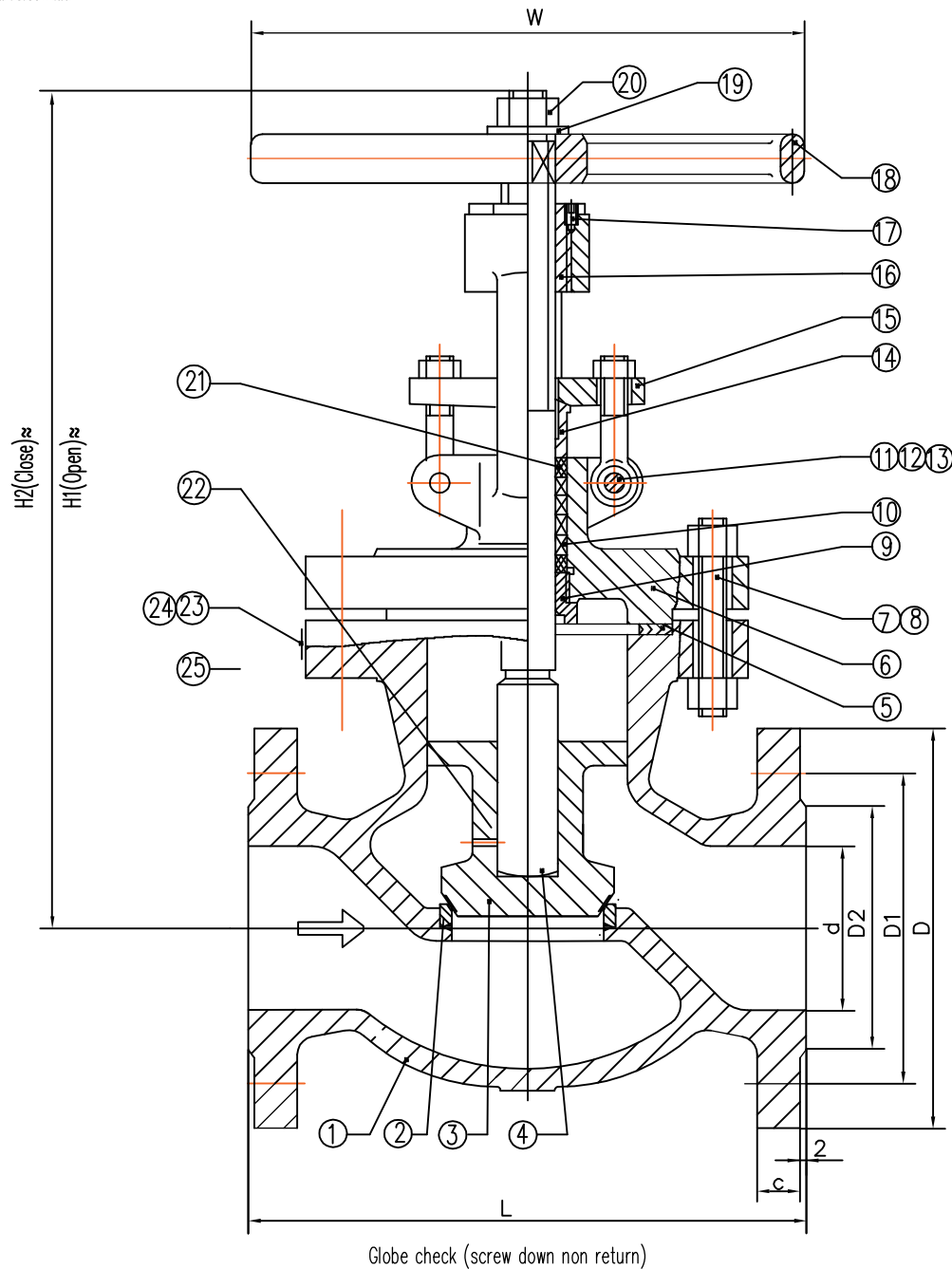
- * Basic Design: API600
- * Pressure / Temp: B16.34
- * Buttwelding Ends: ANSI B16.25
- * End Connections: ANSI B16.5
- * Dimensions: B16.10
- * Sch No: 160#

Manually Operated Parallel Slide Gate Valve	DRAWING NO.	2"GAD15B5C6-160#	APPROVED	B.T.
Australian Pipeline Valve / Steamco	DATE:	15-05-2008	CHECKED	S.Q.
	REV:	1	DRAWN	C.C.



STEAMCOTM

AUSTRALIAN PIPELINE VALVE
www.australianpipelinevalve.com.au



BILL OF MATERIALS:

No.	Part Name	Material	No.	Part Name	Material
14	Gland	ASTM A276 410	1	Body	ASTM A216 WCB
15	Gland flange	ASTM A216 WCB	2	Seat	ASTM A105+STL NO.6
16	Stem Nut	Aluminium Bronze	3	Disc	ASTM A216 WCB+13Cr
17	Screw	C.S.	4	Stem	ASTM A182 F6a
18	Handwheel	Malleable Iron	5	Gasket	316 Jacketed Graphite
19	Washer	C.S.	6	Bonnet	ASTM A216 WCB
20	Nut	C.S.	7	Bolt	ASTM A193 B7
21	Packing	Braided Graphite	8	Nut	ASTM A194 2H
22	Disc Cover	ASTM A276 410	9	Back seat	ASTM A276 410
23	Nameplate	304SS	10	Packing	Flexible Graphite
24	Rivet	Bronze	11	Eyebolt	ASTM A193 B7
25	Washer	304SS	12	Nut	ASTM A194 2H
			13	Pin	C.S.

DIMENSIONS:

4"	356	255	200.0	157	30.2	8-ø22	350	519	560	86
NPS	L	D	D1	D2	c	n-d1	W	H2	H1	WT. kg

TECHNICAL PERFORMANCE:

NOMINAL DIAMETER	4" (DN100)
NOMINAL PRESSURE	300Lb (PN5.0MPa)
SHELL TEST PRESSURE	7.7 MPa
SEAL TEST PRESSURE	5.7 MPa
AIRTIGHT TEST PRESSURE	0.6 MPa
SUITABLE TEMPERATURE	-29 ~ 425
SUITABLE MEDIUM	W. O. G
BODY MATERIAL	ASTM A216 WCB

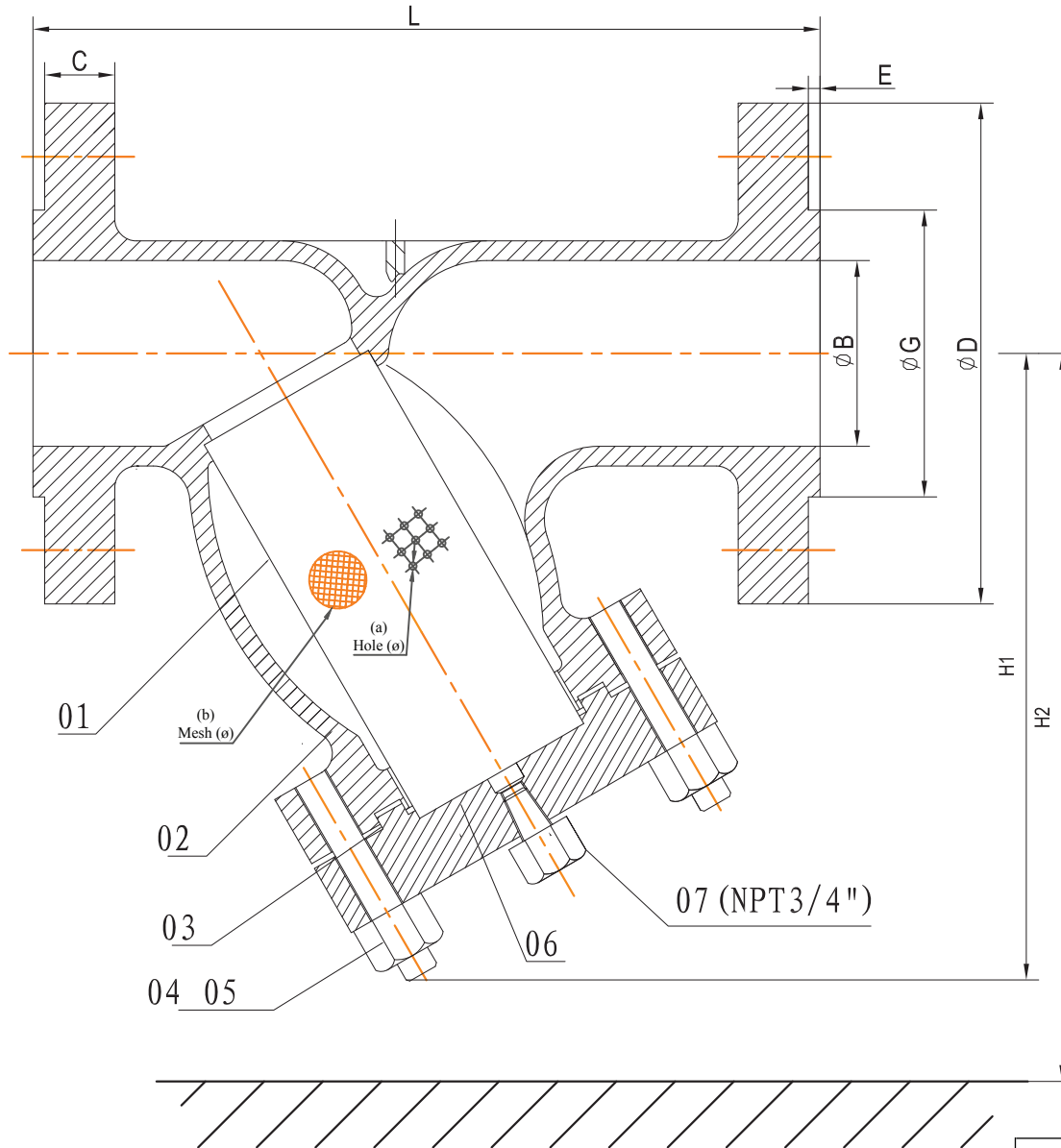
NOTES:

1. Design and Manufacture: B16.34 / API 600
2. Face-to-Face: Client request
3. Connection End: Client request
4. Inspection and Test: API 598
5. Other requirements according to valve specification sheets
6. Flange faces smooth finish to 3.2 to 6.3 RA (125 to 250 AARH)

Globe Check Valve, 4" (DN100) 300LB	ORDER NO.	504145BT - 318	APPROVED	B.T.
Australian Pipeline Valve / Steamco	DATE:	29-05-2009	CHECKED	S.Q.
	REV:	1	DRAWN	C.C.

BILL OF MATERIALS:

ITEM	NAME	MATERIAL
1	SCREEN	SS316
2	BODY	WCB
3	GASKET	GRAPHITE+SS316
4	NUT	ASTM A194 2H
5	STUD	ASTM A193 B7
6	COVER	ASTM A105
7	Drain plug	ASTM A105 (NPT3/4")



TECHNICAL SPECIFICATIONS:

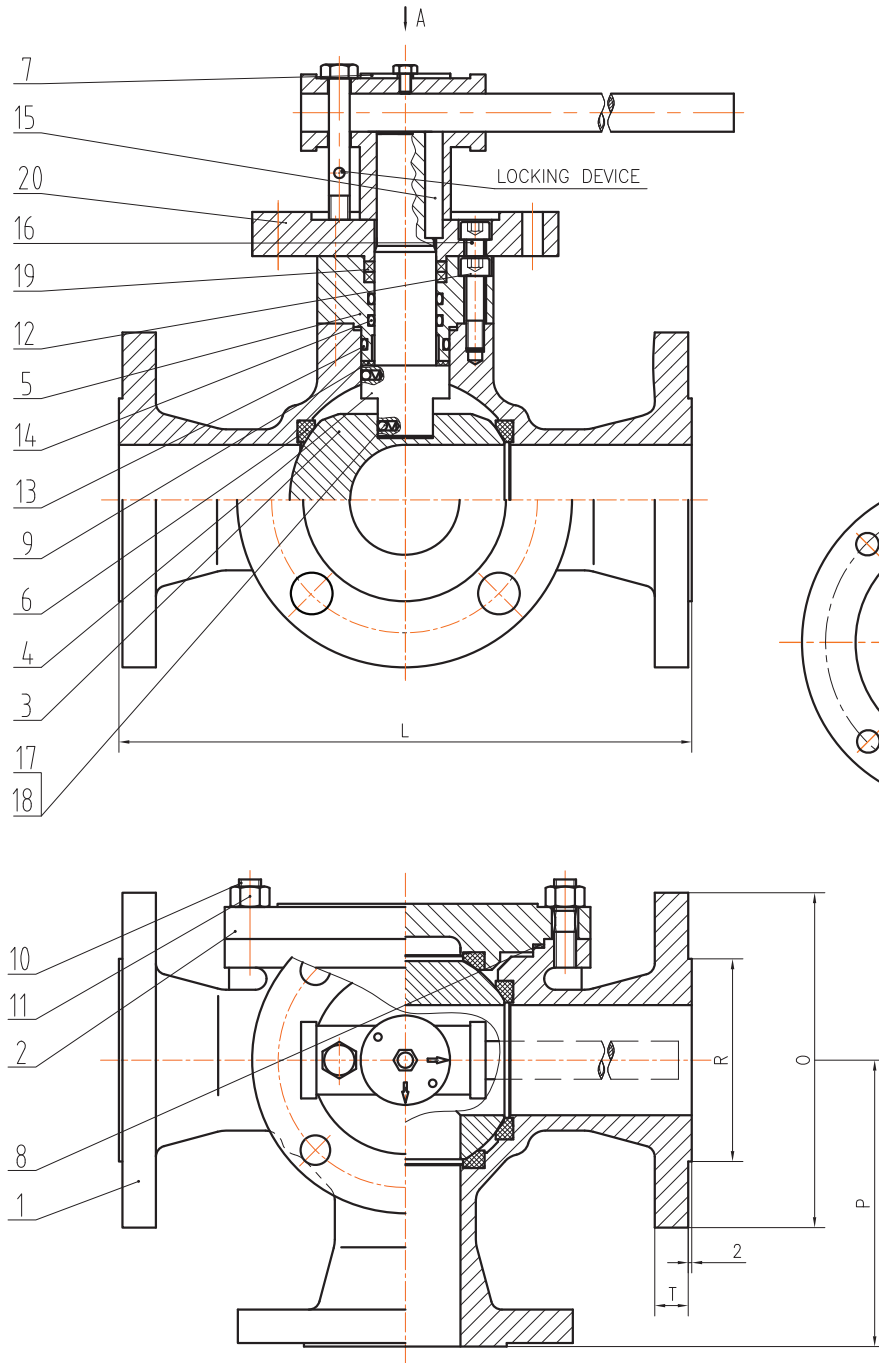
DESIGN STD.	ASME B16.34	END CONN.	RTJUC
PRES. & TEMP.	ASME B16.34	PRES. TEST	API 598
FACE TO FACE	ASME B16.10	END DIME.	ASME B16.5
MARKING	MSS SP-25	F. S. DESIGN	
PAINTING		SPECIAL	

DIMENSIONS:

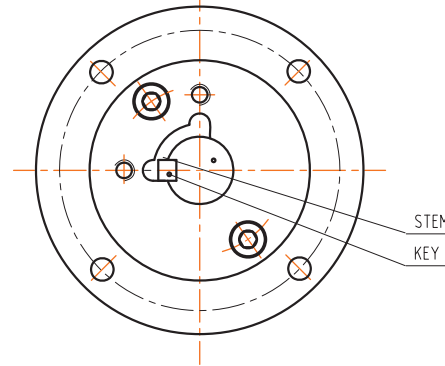
ITEM	SIZE	L	B	D	G	P	E	F	H1	H2	(a) Screen Hole	(b) Mesh Hole
373	2"	371	49	216	124	95.25	7.92	11.91	285	345	0.8	

PART NO.: SL8111

Y-Strainer 1500 Class	PO NO.	507986BT-373	APPROVED	B.T.
	DATE:	29-09-2014	CHECKED	S.Q.
	Australian Pipeline Valve/ Flowturn	REV:	01	DRAWN

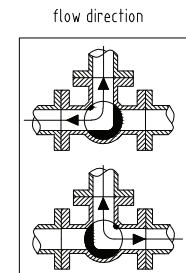


Top View



BILL OF MATERIALS:

ITEM	NAME	MATERIAL
1	BODY	A216 WCB
2	CAP	A216 WCB
3	BALL	A182 F304
4	STEM	A182 F304
5	UPPER COVER	A105+ENP
6	SEAT	RPTFE
7	INDICATING PLATE	SS304
8	S.F. GASKET	304+GRAPHITE
9	THRUST WASHER	RPTFE
10	BOLT	A193 B7+Zn
11	NUT	A194 2H+Zn
12	SCREW	A193 B7
13	O RING	VITON
14	O RING	VITON
15	KEY	AISI 1045
16	SCREW	A193 B7
17	SPRING	A276 316
18	ANTISTATIC BALL	A276 316
19	PACKING	GRAPHITE
20	ADAPTOR	CS



TECHNICAL SPECIFICATIONS:

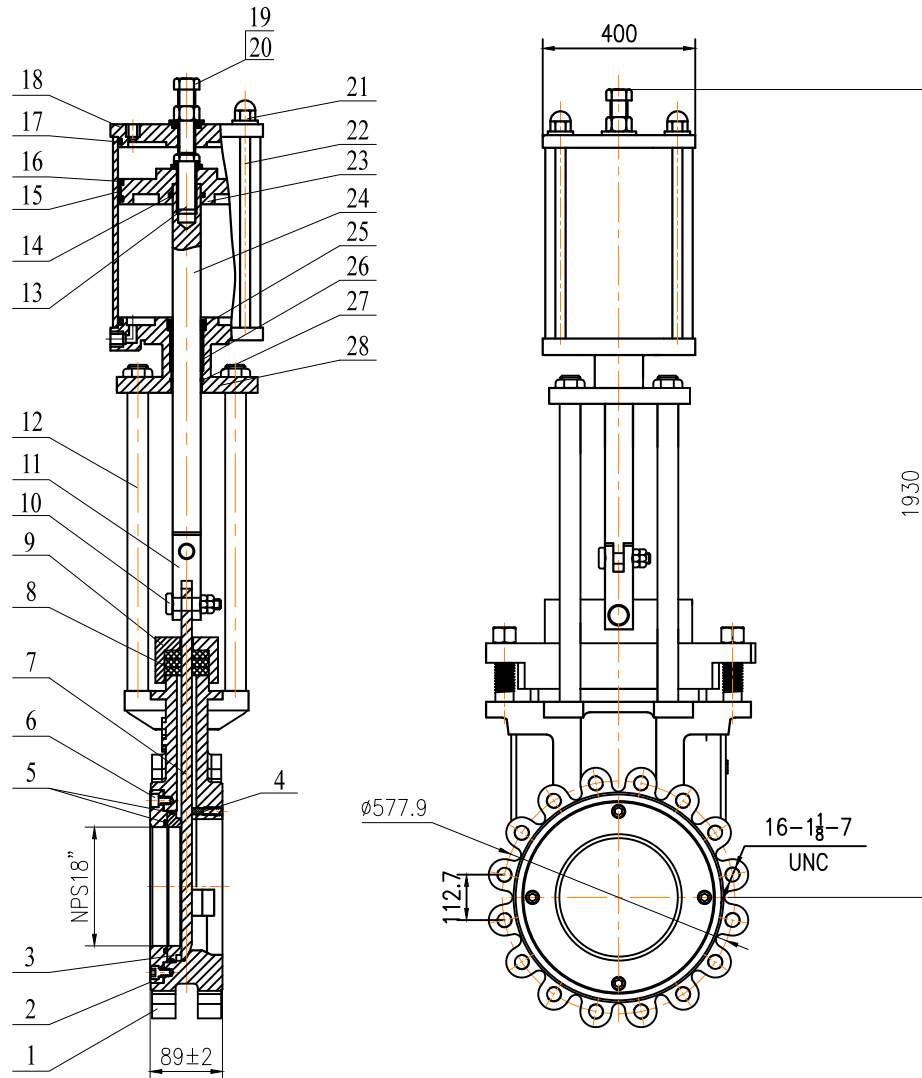
DESIGN STD.	ISO 17292	END CONN.	RF(UN DRILL BOLTS HOLE)
PRES. & TEMP.	ASME B16.34	PRES. TEST	API 598
FACE TO FACE	APV STD.	END DIME.	ASME B16.5
MARKING	MSS SP-25	F.S. DESIGN	API 607
PAINTING		SPECIAL	

DIMENSIONS:

ITEM	SIZE	L	R	O	T	P
16	3"	278	127	190	17.5	139
27	4"	370	157.2	230	22.3	185

PART NO.: SL8142-FZ

3-Way Floating Ball Valve L-Port, 150 Class, FB, UNDRILL RF, LO Flowturn	PO NO.	507986BT-373	APPROVED	B.T.
	DATE:	29-09-2014	CHECKED	S.Q.
	REV:	01	DRAWN	C.C.



BILL OF MATERIALS:

No.	Name	Material
28	Lower cylinder cover	Aluminium Alloy
27	O-ring	NBR
26	Bearing	Composite material
25	Y-ring	NBR
24	Shaft	SS304
23	Piston	A102
22	Bolt	SS304
21	Nut	SS304
20	Nut	SS304
19	Bolt	SS304
18	Upper cylinder cover	Aluminium Alloy
17	O-ring	NBR
16	O-ring	NBR
15	Guide Seal	PTFE
14	O-ring	NBR
13	Bolt	SS304
12	Pillar	SS304
11	Connecting joint	SS304
10	Pin	SS304
9	Gland	WCB+FBE
8	Packing	PTFE
7	Gate	SS304+HCr
6	Socket Head Cap Screw	SS304
5	O-ring	NBR
4	Adjustable Jaw	PTFE
3	Seat	SS304+HCr
2	Clamp Ring	Q235
1	Body	WCB+FEB

TECHNICAL SPECS:

DESIGN & MANUFACTURE:	MSS SP 81-2001
FACE TO FACE DIMENSION AS PER :	MSS SP 81-2001
END CONNECTION DIMENSIONS AS PER:	ASME B16.5
ACTUATOR AIR SUPPLY PRESSURE:	50PSI MIN, 100PSI MAX
FUSION BONDED EPOXY BODY	

PERFORMANCE SPECS:

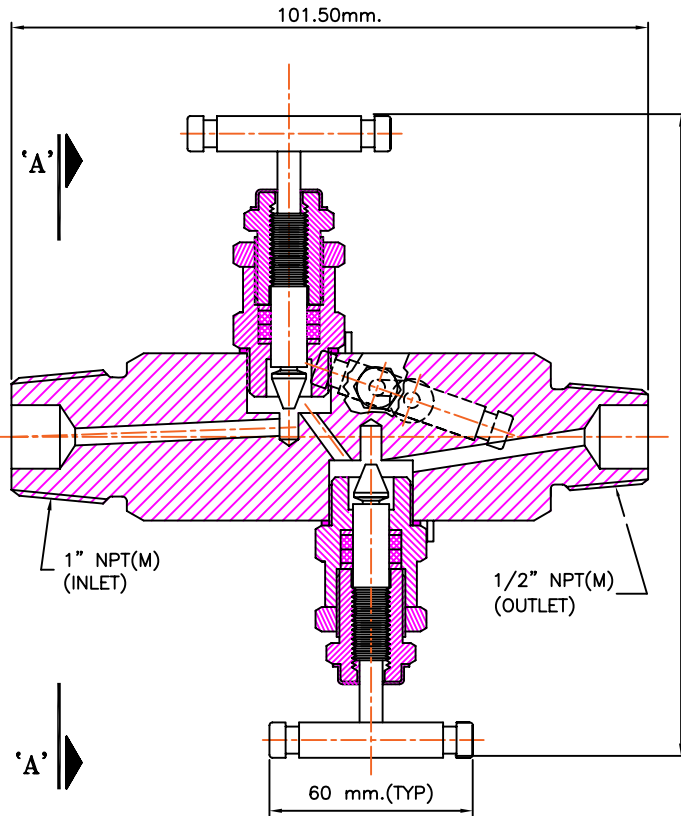
Class 150LB			
Test Pressure	Shell Test	3.0	MPa
	Seal Test	2.2	
Leakage			40ml min/in

Item No 336

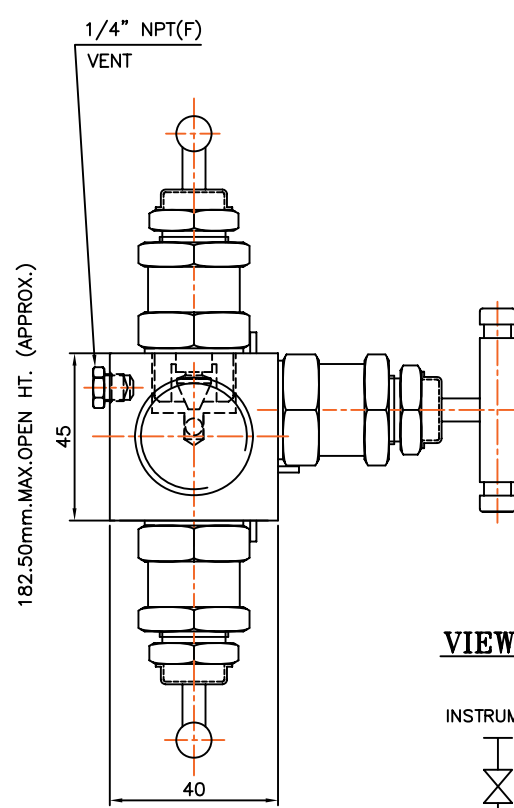
Knife Gate Valve 125 Rated, Semi Lugged	ORDER NO:	507995BT	APPROVED:	B.T.
	DATE:	16-05-2014	CHECKED:	S.Q.
Australian Pipeline Valve / Flowturn	REV:	0	DRAWN:	C.C.



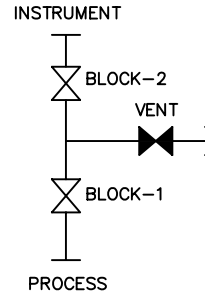
AUSTRALIAN PIPELINE VALVE®
www.australianpipelinevalve.com.au



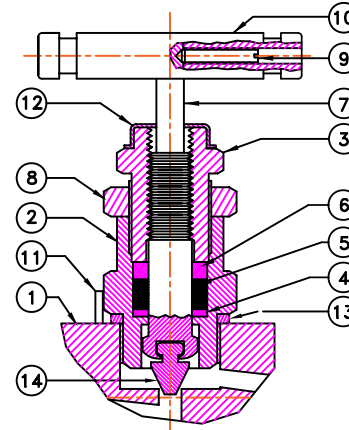
ELEVATION



VIEW - 'AA'



SCHEMATIC



BONNET ASSEMBLY

BILL OF MATERIALS:

S.NO.	DESCRIPTION	QTY.	MATERIAL
14	NON ROTATING VEE TIP	3	A564-630
13	WASHER	3	A479-316
12	DUST CAP	3	PLASTIC LD.
11	LOCK PIN	3	A479-316
10	HANDLE	3	A479-316
9	GRUB SCREW	3	STEEL
8	LOCK NUT	3	A479-316
7	SPINDLE	3	A479-316
6	PACKING WASHER	3	A479-316
5	PACKING	3	GRAFOIL
4	WASHER	3	A479-316
3	GLAND RETAINER	3	A479-316
2	BONNET	3	A479-316
1	BODY	1	A479-316

FEATURES :

316 S.S. BODY CONSTRUCTION FOR SUPERIOR CORROSION RESISTANCE. NON ROTATING VEE TIP PREVENTS GALLING & PROMOTES REPETITIVE SHUT-OFF. OPTIONAL GRAFOIL PACKING MATERIAL IS AVAILABLE FOR HIGH TEMP. RATING 1000°F @ 6000 PSI

TESTING:

PNEUMATIC TEST:- EACH VALVE IS TESTED WITH NITROGEN AT 100 Psi IN ACCORDANCE WITH MSS-SP-61 FOR SEAT & PACKING LEAKAGE.

HYDRO TEST:-

PERFORMED WITH PURE WATER IN ACCORDANCE WITH MSS-SP-61. BODY TESTED AT 1.5 TIMES & SEAT LEAKAGE TESTED AT 1.1 TIMES OF THE WORKING PRESSURE.

DESIGN STANDARD :

PRESSURE & TEMPERATURE RATING ARE SELECTED FROM ANSI B16.34 STANDARD CLASS VALVES BASED ON ANSI B16-CLASS 2500 OPTIONAL SOUR GAS SERVICE CONFIRMS TO NACE STD. MR-01-75

NOTE: 1) Dimensions are in MM. For reference only, subject to change
2) Approximate weight = 0.95 KG. (2.1 LBS)

TECHNICAL DATA:

Seat	Pr. Rat.	Temp. Rat.		Cv	Orifice
		PTFE	GRAFOIL		
METAL SEAT	6000 PSI (41300 kpa)	-20 to 250°F (-29° to 121°C)	-20 to 1000°F (-29° to 538°C)	0.52 max.	4.8mm

PART No: S-M9-HIS84Q-BLV6

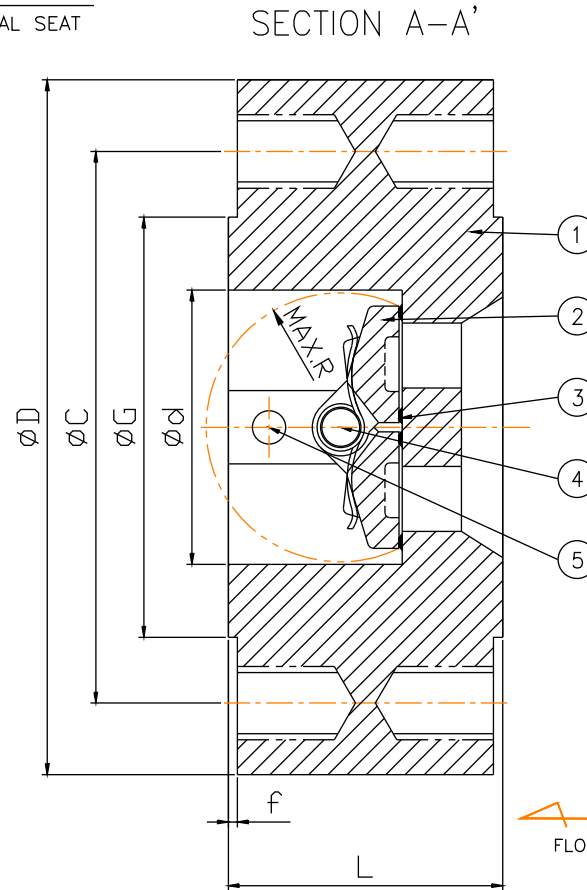
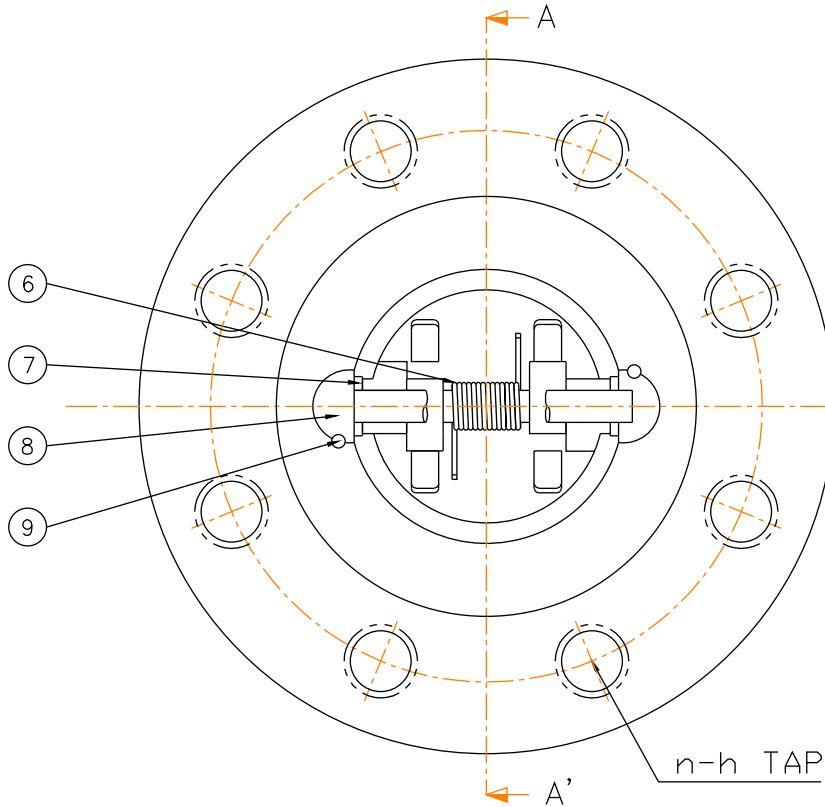
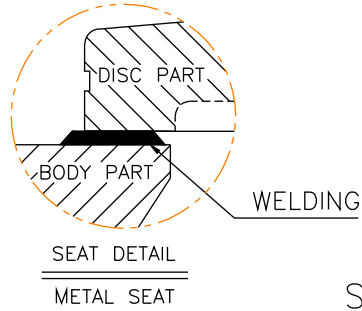
SCALE - NTS

1" NPT(M) INLET X 1/2" NPT(M) OUTLET BLOCK & BLEED VALVE		DRAWING NO.	PDBB-H-S-16-8-MM-HT-SG	APPROVED	B.T.
		DATE:	17-10-2011	CHECKED	S.Q.
Australian Pipeline Valve / Flowturn		REV:	01	DRAWN	C.C.



SUPER.CHECK®

AUSTRALIAN PIPELINE VALVE®
www.australianpipelinevalve.com.au



BILL OF MATERIALS:

No.	PART NAME	MATERIAL	Q'TY
1	BODY	A352 LCC	1
2	DISC	A351 CF8M	2
3	SEAT	STL.#6 OVERLAY	1
4	HINGE PIN	A276 T316	1
5	STOP PIN	A276 T316	1
6	SPRING	INCONEL X750	1
7	BODY WASHER	A276 T316	1SET
8	GUIDE	A276 T316	2
9	SET SCREW	A193 B8M	1SET
-	NAME PLATE	ALUMINIUM	1

TECHNICAL SPECS:

PAINT SPECIFICATION		
	1'st	2'nd
Paint Name	Zinc Epoxy Primer	Polyurethane
Color	Gray	Gray
D.F.T(micron)	30	30
Final Color : Gray, Total Thickness : 60 minimum		

TEST SPECIFICATION – API 598				
	BODY		SEAT	
Test Fluid	Water		Water	
Test Pressure	2225psi		1630psi	
Holding Time	V/V Size	Time(sec)	V/V Size	Time(sec)
	2" ~ 6"	60	2" ~ 6"	60
	8" ~ 12"	120	8" & over	120
14" & over	300			
Seat Leakage : 3cc/min x size(inch)				

*** NOTES**

- Design Standard : API 594
- Face to Face Dimension : API 594
- NACE MR0175
- Charpies Impact tested body -46°C

Part No : GW60GCPF1-94-42B

DIMENSIONS:

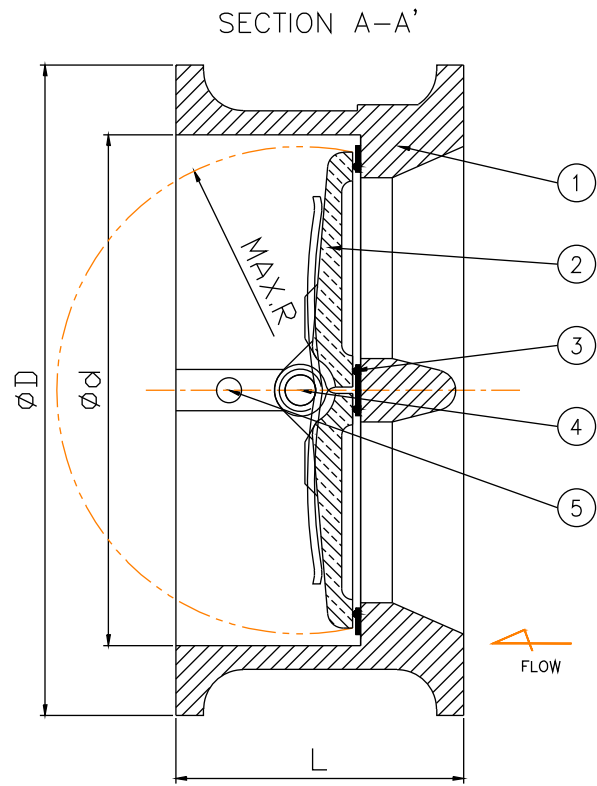
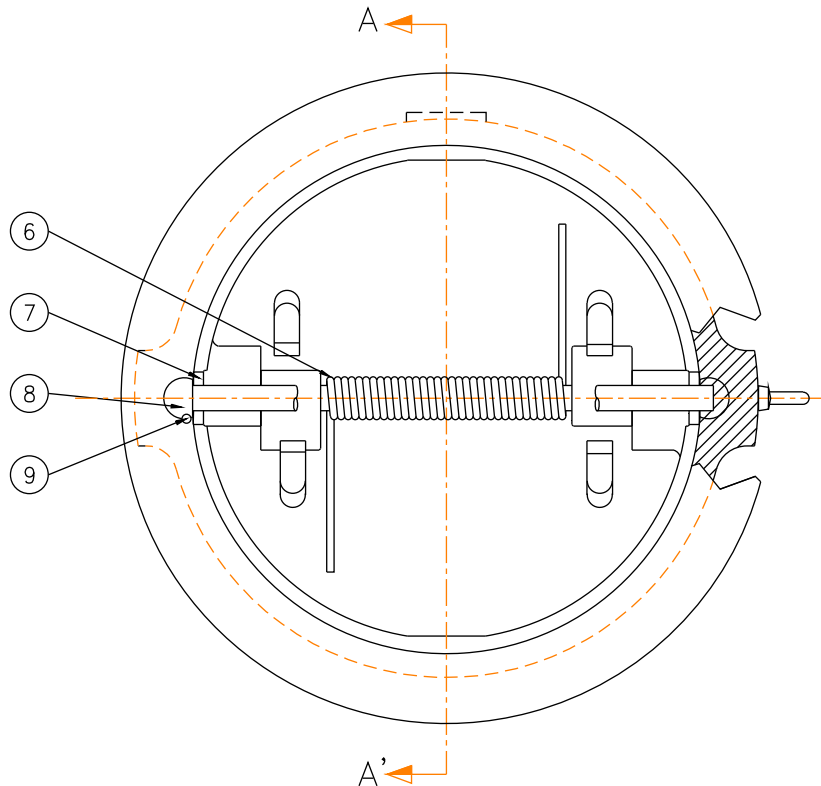
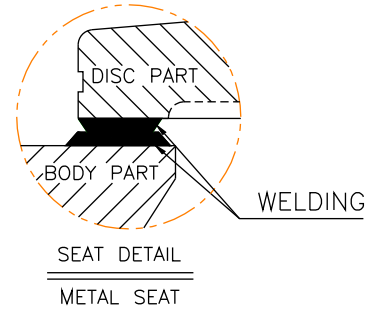
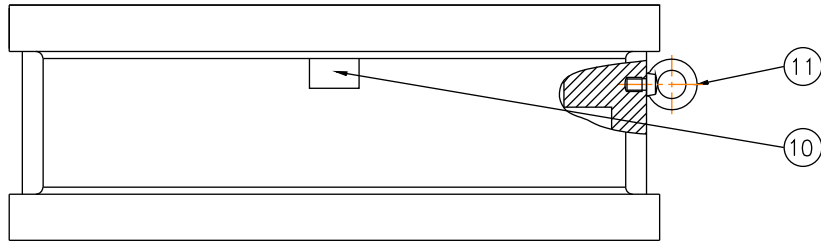
DIMENSIONS										Q'ty
ITEM No.	NOMINAL DIAMETER	L	Ød	FLANGE					MAX.R	
				ØD	ØC	n-h TAP	ØG	f		
140	2"(50A)	60	60	165	127.0	8-5/8"	91.9	6.4	28	5

Dual Flap Check Wafer Valve 600 Class, Lugged, RFSF, Flanged ASME B16.5 Australian Pipeline Valve / Supercheck	ORDER NO:	507989BT	APPROVED:	B.T.
	DATE:	10-05-2014	CHECKED:	S.Q.
	REV:	0	DRAWN:	C.C.



AUSTRALIAN PIPELINE VALVE®
www.australianpipelinevalve.com.au

SUPER-CHECK®



BILL OF MATERIALS:

No.	PART NAME	MATERIAL	Q'TY	REMARK
1	BODY	A216 WCB	1	
2	DISC	A351 CF8M+STL.#6	2	
3	SEAT	STL.#6 OVERLAY	1	
4	HINGE PIN	A276 T316	1	
5	STOP PIN	A276 T316	1	
6	SPRING	INCONEL X750	1	
7	BODY WASHER	A276 T316	1SET	
8	GUIDE	A276 T316	2	
9	SET SCREW	A193 B8M	1SET	
10	NAME PLATE	ALUMINIUM	1	
11	EYE BOLT	A105	1	10" OVER

TECHNICAL SPECS:

PAINT SPECIFICATION		
	1 st	2 nd
Paint Name	Zinc Epoxy Primer	Polyurethane
Color	Gray	Gray
D.F.T.(micron)	30	30
Final Color : Gray, Total Thickness : 60 minimum		

TEST SPECIFICATION – API 598				
	BODY		SEAT	
Test Fluid	Water		Water	
Test Pressure	3330psi		2450psi	
Holding Time	V/V Size	Time(sec)	V/V Size	Time(sec)
	2" ~ 6"	60	2" ~ 6"	60
	8" ~ 12"	120	8" & over	120
14" & over	300			
Seat Leakage : 3cc/min x size(inch)				

*** NOTES**

- Design Standard : API 594
- Face to Face Dimension : API 594
- NACE MR0175

DIMENSIONS:

DIMENSIONS						UNIT: mm
ITEM NO.	NOMINAL DIAMETER	L	ØD	Ød	MAX.R	Q'ty
203	4"(100A)	102	206	116	52	5
249	8"(200A)	206	359	219	100	1

Part No : GW90SPF-94-41A

Dual Flap Check Wafer Valve 900 Class, Wafer, RF5F, Flanged ASME B16.5			
ORDER NO:	507989BT	APPROVED:	B.T.
DATE:	10-05-2014	CHECKED:	S.Q.
REV:	0	DRAWN:	C.C.
Australian Pipeline Valve / Supercheck			

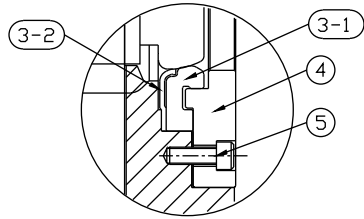


AUSTRALIAN PIPELINE VALVE®
www.australianpipelinevalve.com.au

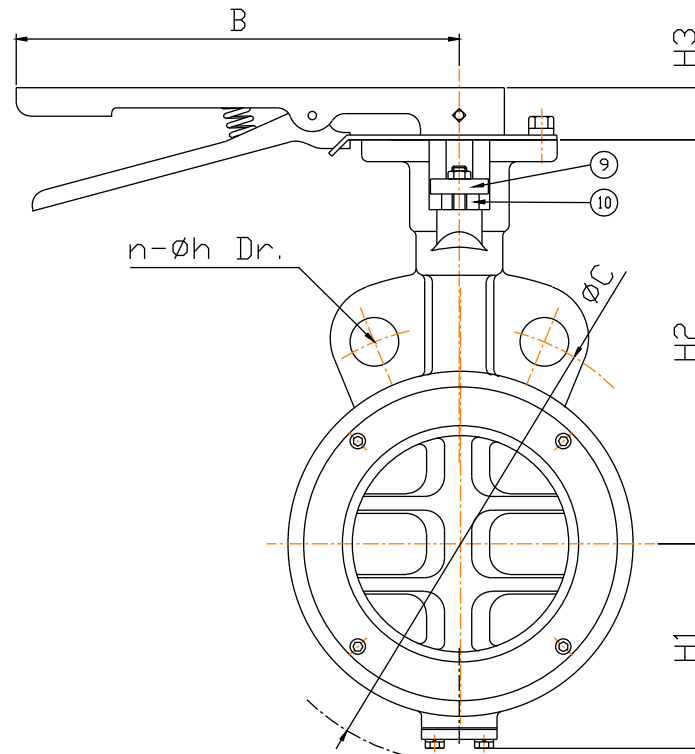
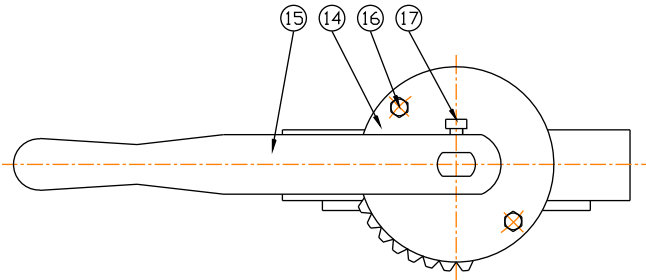
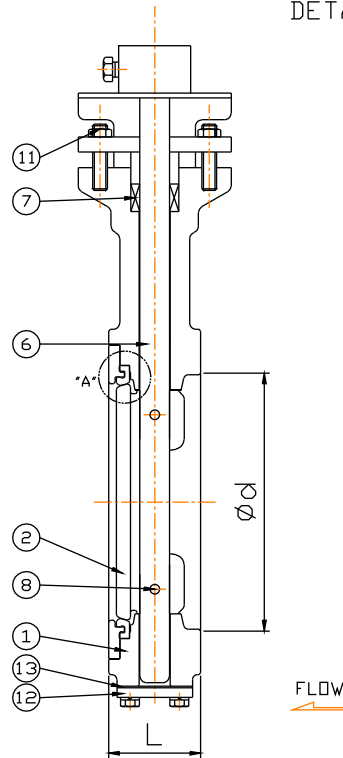


Firesafe Certified
API 607 5th Edition

SUPERSEAL®



DETAIL "A"



BILL OF MATERIALS:

No.	PART NAME	MATERIAL	Q'TY
1	BODY	A216 WCB	1
2	DISC	A351 CF8M	1
3	3-1 SEAT	RPTFE	1
	3-2 SEAT	SS316	1
4	PLATE	A351 CF8M	1
5	SCREW	A193 B8M	1SET
6	SHAFT	A276 T316	1
7	PACKING	GRAPHITE	1SET
8	LOCK PIN	A276 T316	2
9	PAC.GLAND	A240 T304	1
10	GLAND RING	A276 T304	1SET
11	GLAND B/N	A193 B8	2
12	END COVER	A240 T304	1
13	GASKET	GRAPHITE	1
14	INDICATOR	A36+GALV.	1
15	LEVER	ASS'Y	1
16	INDI. BOLT	A193 B8	2
17	LEVER BOLT	A193 B8	1

TECHNICAL SPECS:

PAINT SPECIFICATION		
	1'st	2'nd
Paint Name	Zinc Epoxy Primer	Hammerstone
Color	Gray	Darkcyne
D.F.T(micron)	30	30
Final Color : Dark Cyan, Total Thickness : 60 minimum		

TEST SPECIFICATION – API 598				
	BODY		SEAT	
Test Fluid	Water		Water	
Test Pressure	450psi		315psi	
Holding Time	V/V Size	Time(sec)	V/V Size	Time(sec)
	2" ~ 6"	60	2" ~ 6"	60
	8" ~ 12"	120	8" & over	120
14" & over	300			

*** NOTES**

- Design Standard : API 609
- Face to Face Dimension : API 609 Category B
- Firesafe : API 607
- Bi-directional
- NACE MR0175

Part No : SLHBFFS-AWABRG

DIMENSIONS:

DIMENSIONS										UNIT: mm
ITEM No.	NOMINAL DIAMETER	ød	L	FLANGE		REFERENCE				Q'ty
				øC	n-øh Dr.	H1	H2	H3	B	
54	6"(150A)	155	57	241.3	2-ø22	130	220	35	267	4

Hi-Performance Butterfly Valve
150 Class, Wafer, RF, LOP
Flanged ASME B16.5

Australian Pipeline Valve /
Superseal

ORDER NO:	507989BT	APPROVED:	B.T.
DATE:	10-05-2014	CHECKED:	S.Q.
REV:	0	DRAWN:	C.C.

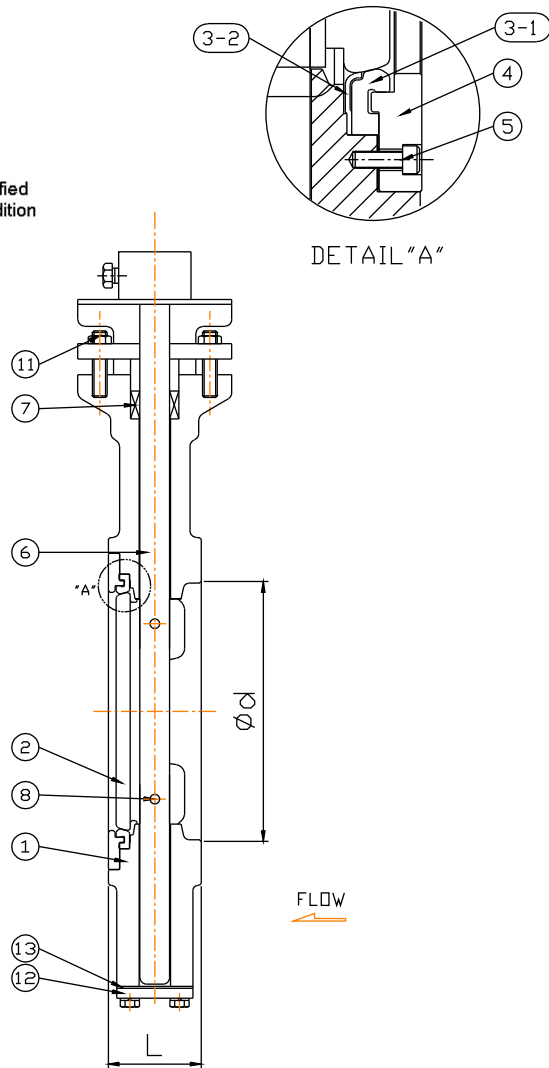


AUSTRALIAN PIPELINE VALVE®
www.australianpipelinevalve.com.au

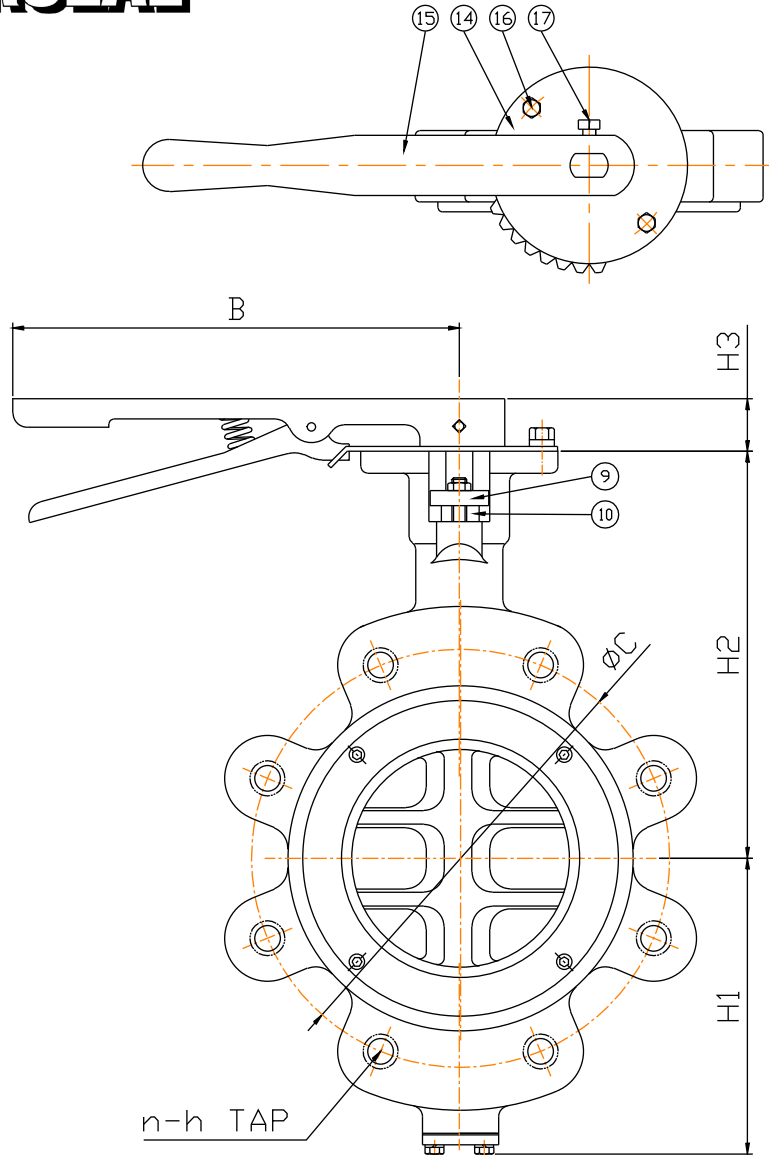


Firesafe Certified
API 607 5th Edition

SUPERSEAL®



DETAIL "A"



BILL OF MATERIALS:

No.	PART NAME	MATERIAL	Q'TY
1	BODY	A216 WCB	1
2	DISC	A351 CF8M	1
3	3-1 SEAT	PTFE	1
	3-2 SEAT	SS316	1
4	PLATE	A351 CF8M	1
5	SCREW	A193 B8M	1SET
6	SHAFT	A276 T316	1
7	PACKING	GRAPHITE	1SET
8	LOCK PIN	A276 T316	2
9	PAC.GLAND	A240 T304	1
10	GLAND RING	A276 T304	1SET
11	GLAND B/N	A193 B8	2
12	END COVER	A240 T304	1
13	GASKET	GRAPHITE	1
14	INDICATOR	A36+GALV.	1
15	LEVER	ASS'Y	1
16	INDI. BOLT	A193 B8	2
17	LEVER BOLT	A193 B8	1

TECHNICAL SPECS:

PAINT SPECIFICATION		
	1'st	2'nd
Paint Name	Zinc Epoxy Primer	Hammertone
Color	Gray	Darkcyne
D.F.T(micron)	30	30
Final Color : Dark Cyan, Total Thickness : 60 minimum		

TEST SPECIFICATION - API 598				
	BODY		SEAT	
Test Fluid	Water		Water	
Test Pressure	1100psi		815psi	
Holding Time	V/V Size	Time(sec)	V/V Size	Time(sec)
	2" ~ 6"	60	2" ~ 6"	60
	8" ~ 12"	120	8" & over	120
14" & over	300			

*** NOTES**

- Design Standard : API 609
- Face to Face Dimension : API 609 Category B
- Firesafe : API 607
- Bi-directional
- NACE MR0175

Part No : SLHBFFS-BABPG

DIMENSIONS:

DIMENSIONS										UNIT: mm
ITEM No.	NOMINAL DIAMETER	ϕd	L	FLANGE		REFERENCE				Q'ty
				ϕC	n-h TAP	H1	H2	H3	B	
52	4"(100A)	104	54	200.2	8-3/4"	145	180	35	267	2

Hi-Performance Butterfly Valve
300 Class, Lugged, RF, LOP
Flanged ASME B16.5

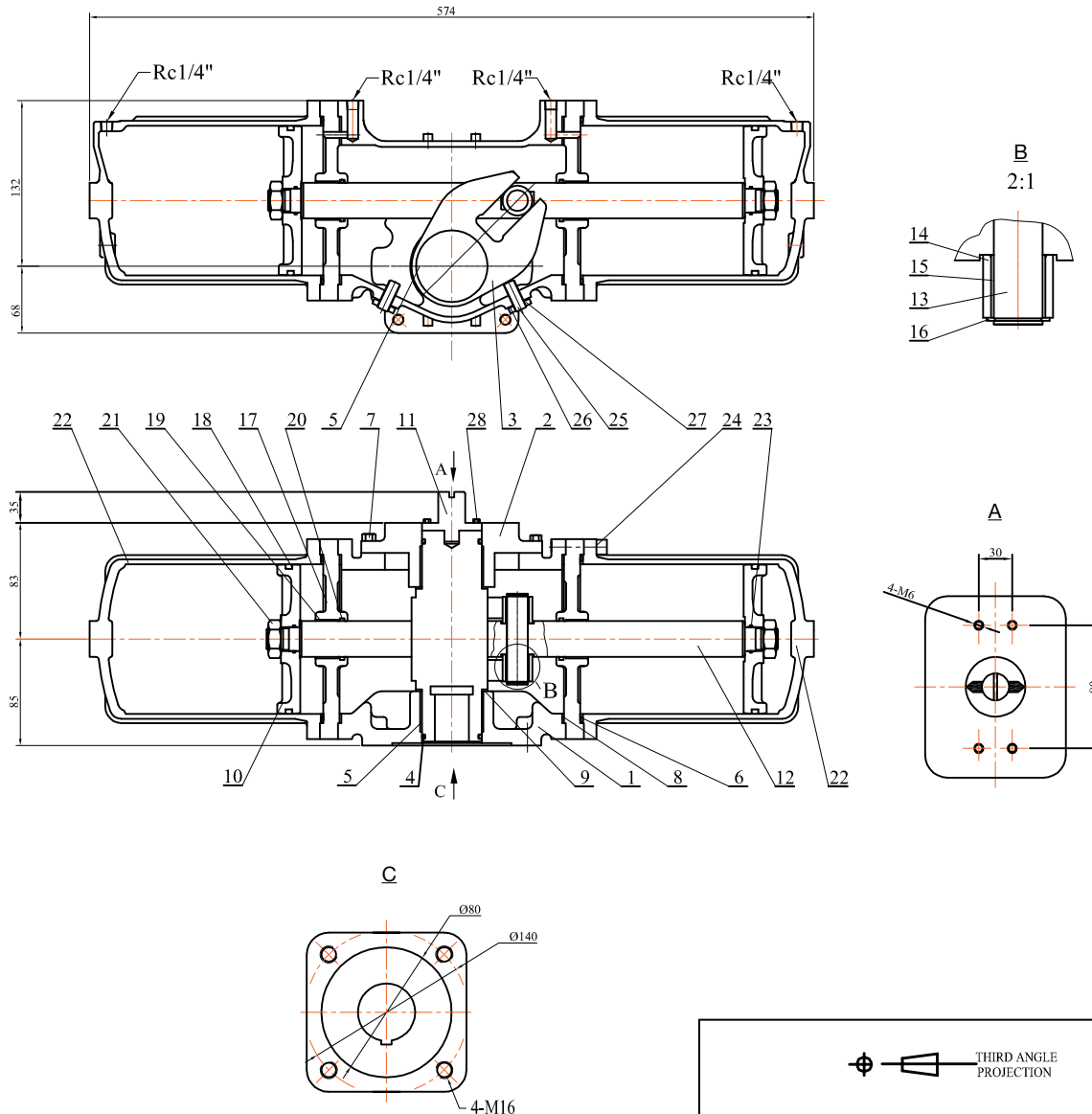
Australian Pipeline Valve /
Superseal

ORDER NO:	507989BT	APPROVED:	B.T.
DATE:	10-05-2014	CHECKED:	S.Q.
REV:	0	DRAWN:	C.C.



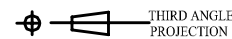
**AUSTRALIAN
PIPELINE VALVE®**
www.australianpipelinevalve.com.au

TORQTURN



BILL OF MATERIALS:

No	PART NAME	MATERIAL	QTY
28	BOLT	304	4
27	NUT	2H	2
26	GASKET	304+VITON	2
25	STOPPER BOLT	SCM435	2
24	CAP SCREW	SCM435	8
23	O-RING	VITON	2
22	CYLINDER	FCD450+PTFE	2
21	NUT	2H	2
20	O-RING	VITON	2
19	BEARING	304+PTFE	2
18	O-RING	VITON	2
17	ADAPTER	FC200	2
16	SNAP RING	65Mn	2
15	BEARING	304+PTFE	2
14	ROLLER	S45C	2
13	PIN	S45C	1
12	PISTON ROD	S45C	1
11	INDICATOR	304	1
10	PISTON	FC200	2
9	THRUST BEARING	RPTFE	2
8	GASKET	T-1995	2
7	BOLT	SCM435	7
6	O-RING	VITON	2
5	BEARING	304+PTFE	2
4	O-RING	VITON	2
3	PARA ARM	FCD450	1
2	BODY CAP	FC200	1
1	BODY	FC200	1



THIRD ANGLE
PROJECTION

Australian Pipeline Valve / Torqturn	DRAWING NO.	115679/1 JA130	APPROVED	B.T.
	DATE:	-	CHECKED	S.Q.
	REV:	01	DRAWN	C.C.

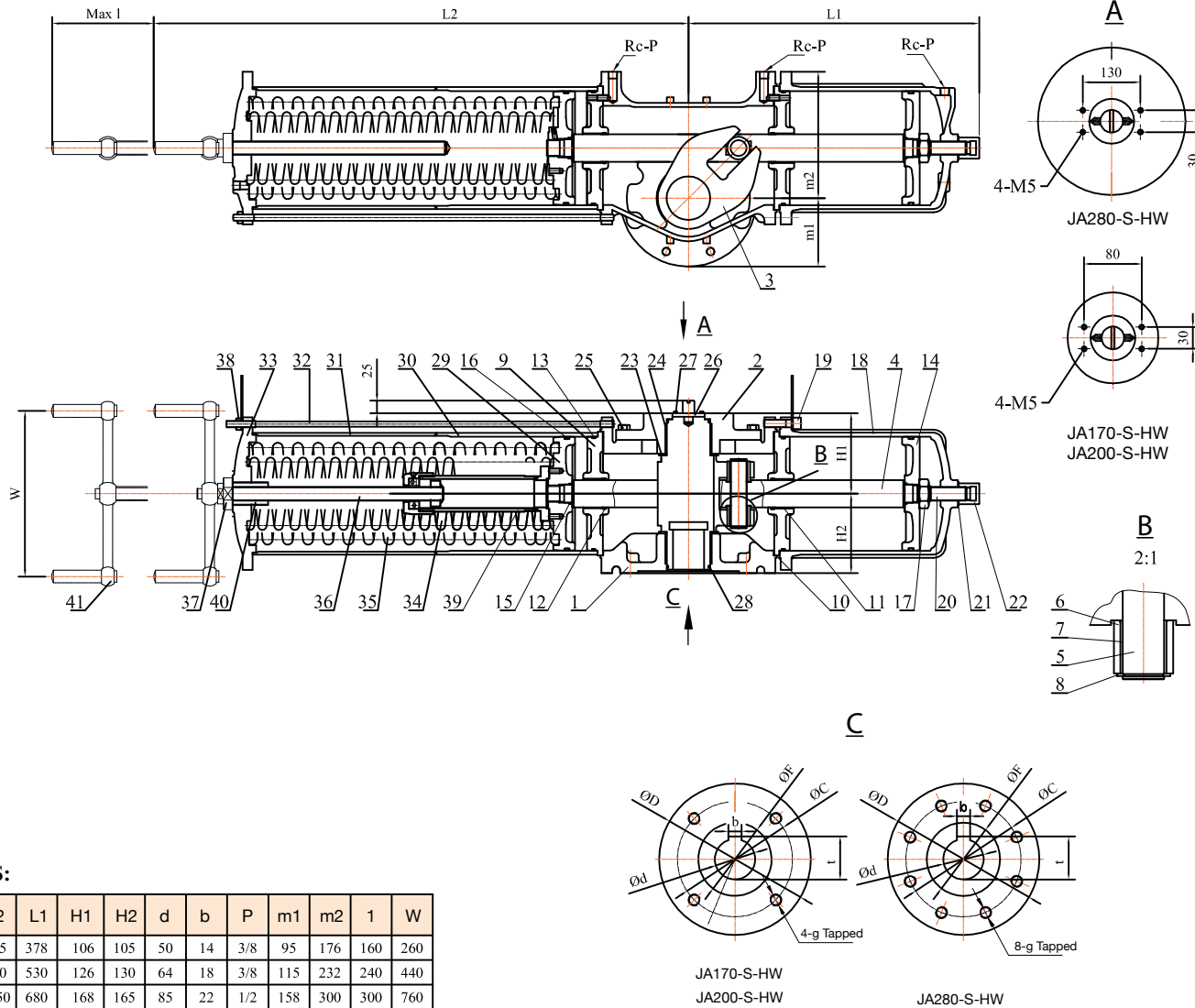


TORQTURN

AUSTRALIAN PIPELINE VALVE®
www.australianpipelinevalve.com.au

BILL OF MATERIALS:

No	PART NAME	MATERIAL	QTY
41	HANDLE WHEEL	FCD450	1SET
40	NUT	FCD450	1SET
39	STOPER CASE	CARBON STEEL	1SET
38	NUT	2H	1SET
37	NUT	SS400	1
36	BOLT	SS400	1
35	SPRING	60Si2Mn	1
34	SPRING	60Si2Mn	1
33	SPRING COVER	FCD450	1
32	LONG BOLT	S45C	1SET
31	SPRING CASE	CARBON STEEL+PTFE	1
30	CYLINDER	CARBON STEEL+PTFE	1
29	SPRING RETAINER	FCD450	1
28	O-RING	VITON	2
27	BOLT	304	4
26	INDICATOR	304+VITON	1
25	BOLT	SCM435	7-9
24	BEARING	304+PTFE	2
23	THRUST BEARING	RPTFE	2
22	CAP NUT	SS400	1
21	GASKET	304+VITON	1
20	STOPPER BOLT	SCM435	1
19	CAP SCREW	SCM435	1SET
18	CYLINDER	FCD450+PTFE	1
17	NUT	SS400	1
16	O-RING	VITON	2
15	O-RING	VITON	2
14	PISTON	FC200	1
13	O-RING	VITON	2
12	O-RING	VITON	2
11	BEARING	304+PTFE	2
10	GASKET	T-1995	2
9	ADAPTER	FC200	2
8	SNAP RING	65Mn	2
7	BEARING	304+PTFE	2
6	ROLLER	S45C	2
5	PIN	S45C	1
4	PISTON ROD	S45C	1
3	PARA ARM	FCD450	1
2	BODY CAP	FC200	1
1	BODY	FC200	1



DIMENSIONS:

MODEL	L2	L1	H1	H2	d	b	P	m1	m2	1	W
JA170-S-HW	705	378	106	105	50	14	3/8	95	176	160	260
JA200-S-HW	960	530	126	130	64	18	3/8	115	232	240	440
JA280-S-HW	1250	680	168	165	85	22	1/2	158	300	300	760

MODEL	D	C	F	t	g
JA170-S-HW	190	165	130	53.8	M20
JA200-S-HW	230	165	130	68.4	M20
JA280-S-HW	316	298	220	90.4	M20

DRAWING NO.	115680/1	APPROVED	_____	B.T.
	DATE:		-	
REV:	01	DRAWN	C.C.	

THIRD ANGLE PROJECTION
(WITH HANDLE WHEEL) JA170-S-HW to JA280-S-HW
Australian Pipeline Valve / Torqturn

WORM GEAR OPERATOR

External mechanical stops allow $\pm 5^\circ$ travel.

Fully weather resistant for outdoor service.

O-ring sealed and permanently lubricated along with gears and bearings.

High strength cast iron enclosure.

Optional square operating nut allows for removal of handwheel and operation by a reach rod.

Industry inter-changeable pre-drilled mounting pattern per MSS SP 101.

Custom gear mounting pattern, boring and keyway patterns.

Worm gear dual position mounting capability for easy reversal of rotation direction.

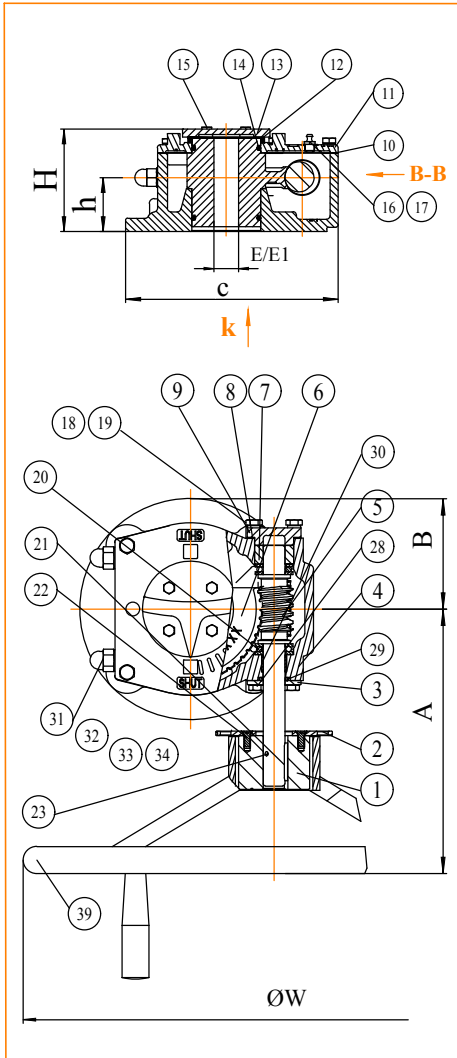
Comprehensive product line for torque capability.

Machine generated self-lock gearing assures minimum backlash and smooth operation.

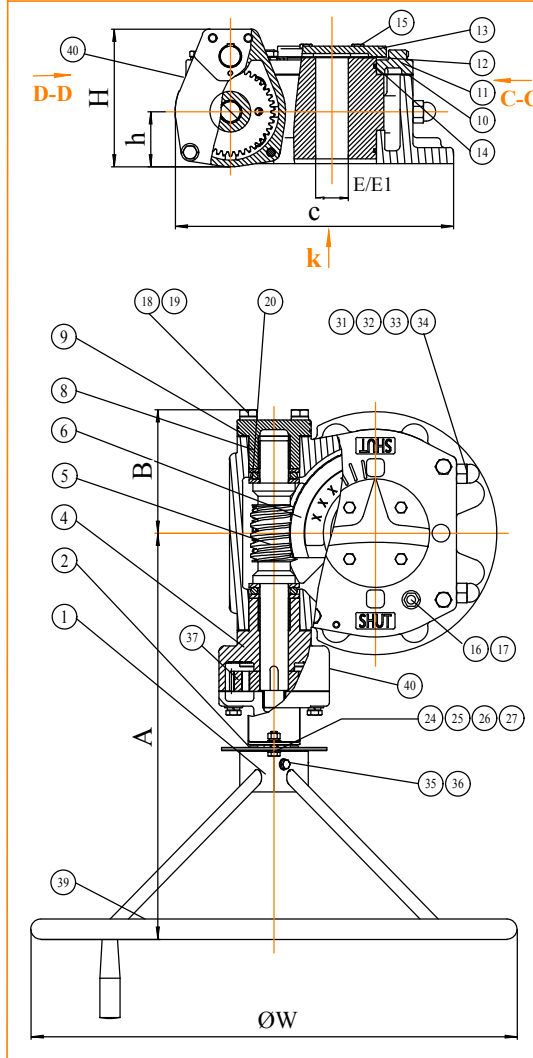
Thrust bearings provide reliable smooth operation

WORMGEAR GEARBOX QUARTER TURN WG SERIES

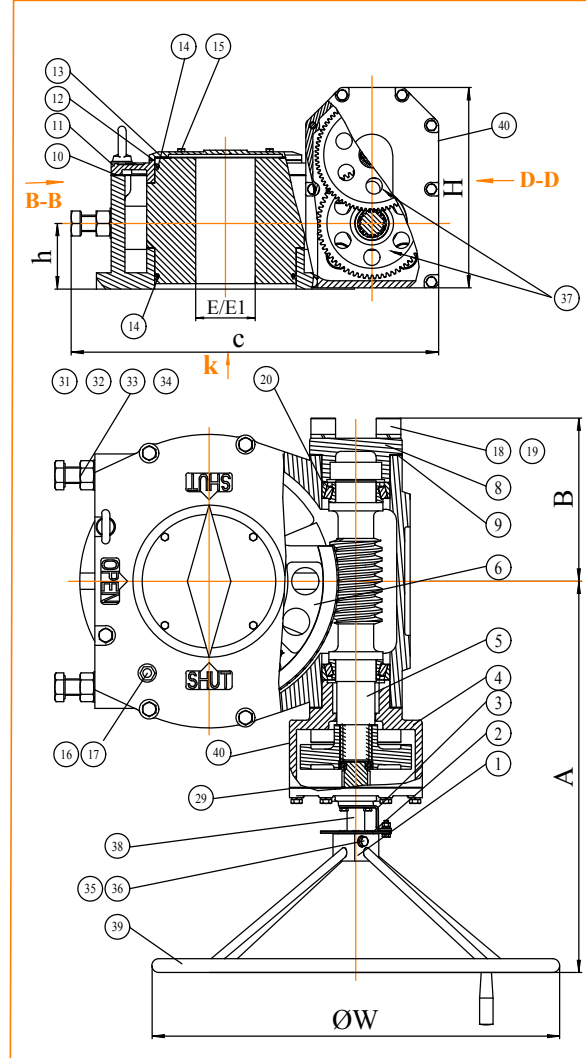
MODEL: WG007/WG008/WG158



MODEL: WG238

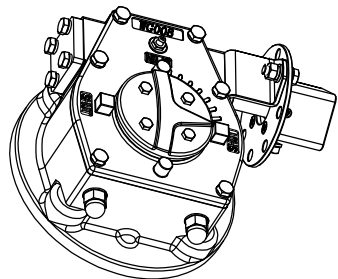


MODEL: WG308/WG358/WG408/WG448/WG508

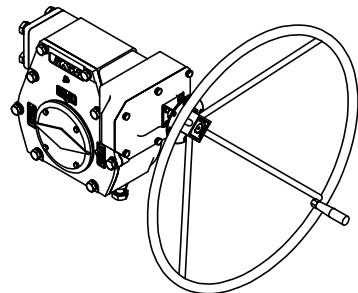


BILL OF MATERIALS WG007-508

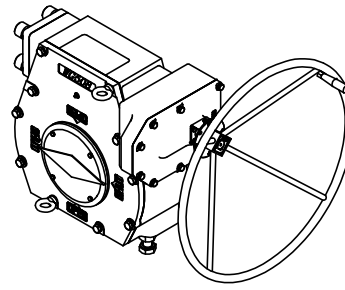
POS	PARTSNAME	QTY	MATERIAL	REMARKS
40	REDUCTION GEAR	1	ASSY	SEE PAGE 3
39	HANDWHEEL	1	DI-Q235A	
38	INPUT GEAR SHAFT	1	AISI 1045	ENP
37	SPUR GEAR	1~4	AISI 1045	PHOSPHATED
36	FLAT WASHER	1	CARBON STEEL	Zn PLATED
35	HEX BOLT	1	CARBON STEEL	Zn PLATED
34	SET SCREW	2	CARBON STEEL	Zn PLATED
33	FLAT WASHER	2	DI-Q235A	Zn PLATED
32	O-RING	2	NBR	
31	BOLT	2	CARBON STEEL	PHOSPHATED
30	OILLESS BEARING	1	COMMERCIAL	
29	O-RING	1	NBR	
28	HEX BOLT	4	CARBON STEEL	PHOSPHATED
27	HEX BOLT	1	CARBON STEEL	Zn PLATED
26	HEX NUT	1	CARBON STEEL	Zn PLATED
25	SPRING WASHER	1	65Mn	Zn PLATED
24	FLAT WASHER	2	CARBON STEEL	Zn PLATED
23	STEM KEY	1	CARBON STEEL	PHOSPHATED
22	SLOTTED SUNK SCREW	4	CARBON STEEL	Zn PLATED
21	FLAT KEY	1	AISI 1045	
20	BEARING	2	COMMERCIAL	
19	HEX BOLT	10	CARBON STEEL	PHOSPHATED
18	SPRING WASHER	10	65Mn	PHOSPHATED
17	OIL SEAL	1	NYLON PA66	
16	GREASE NIPPLE	1	COMMERCIAL	Zn PLATED
15	HEX BOLT	4	CARBON STEEL	PHOSPHATED
14	O-RING	2	NBR	
13	INDICATOR PLATE	1	CI-HT250	
12	INDICATOR PLATE SEAL	1	NBR	
11	BODY CAP	1	CI-HT250	
10	BODY CAP SEAL	1	NBR	
9	LEFT END COVER SEAL	1	NBR	
8	LEFT END COVER	1	DI-Q235A	
7	BEARING SLEEVE	1	FZ1360	Fe-BASE ALLOY
6	WORM GEAR	1	DI-QT500-7	HEAT TREATED
5	WORM/INPUT SHAFT	1	AISI 1045	ENP
4	BODY	1	CI-HT250	
3	LOCK PLATE SUPPORT	1	DI-Q235A	
2	LOCK PLATE	1	DI-Q235A	Zn PLATED
1	DRIVE HEAD	1	Fe-BASE ALLOY	Zn PLATED



MODEL: WG007/WG008/WG108/WG238

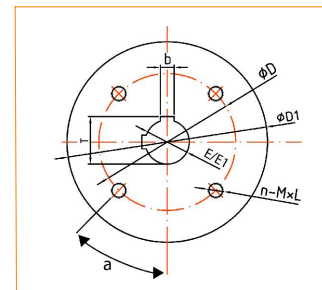


MODEL: WG308/WG358/WG408/WG448



MODEL: WG508

k VIEW ALL MODELS



NOTES

1. MAXIMUM TRAVEL: 90°
2. ADJUSTMENT LIMIT: ±5°
3. WEATHER PROOF: IP65



AUSTRALIAN PIPELINE VALVE®
www.australianpipelinevalve.com.au



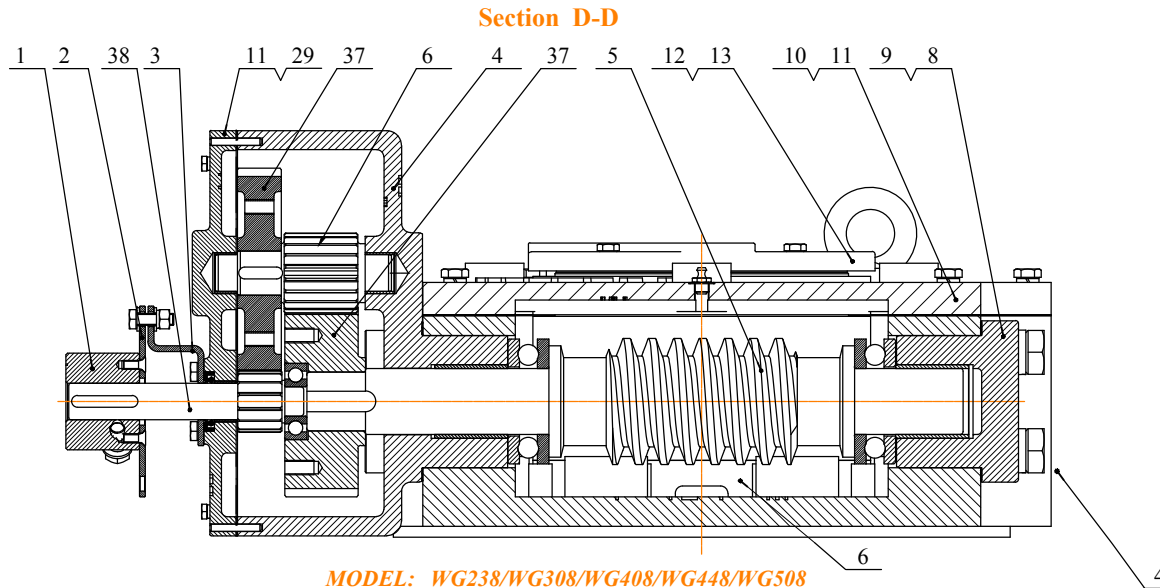


**AUSTRALIAN
PIPELINE VALVE®**
www.australianpipelinevalve.com.au



BILL OF MATERIALS - REDUCTION GEAR WG238-508

No	Parts Coding	Parts Name	Qty	Material
1	B029049001	Lock Plate Seat	1	Steel
2	B027057001	Connecting Plate	1	Q235A
3	B026028001	Stop Block	1	Q235A
4	B010028001	Gear Body	1	HT250
5	B025028002A	Gear Shaft	1	AISI 1045+ENP
6	B002028256	Worm Gear	1	QT500-7 (Heat Treated)
8	B008028001	Left End Cover	1	HT200
9	B019028001	Left End Cover Seal	2	NBR
10	B018028001	Bonnet Cap Seal	1	NBR
11	B005028001	Bonnet Cap	1	HT250
12	B022028001	Indicator Plate Seal	1	NBR
13	B006028001	Indicator Plate	1	HT250
29	B044028001	Gear Cap Seal	1	NBR
37	B014028001	Gear	1	AISI 1045
37	B014028002	Gear	1	AISI 1045
38	B025028001	Gear Shaft	1	AISI 1045



DIMENSIONS (MM) / SPECIFICATIONS WG007-WG508

MODEL	A	B	C	D	D1	E*	EI(Max)	H	h	n-MxL	a	ØW	ISO	Max Keyway Bore Size (mm)	Input Torque (N.m)	Output Torque (N.m)	Gear Ratio	Turns to Open 90°	Efficiency %	Weight (KG)
WG007	242	78.8	174	125	150	20	41	91.5	39	4-M12X18	45°	465	F12	41	75	720	42:1	18	23	12.1
WG008	245	102.5	216.5	140	205	25	48	104.5	55	4-M16X24	45°	465	F14	48	115	1200	50:1	12	21	17
WG108	380	112.4	262	165	210	30	58	109.5	51	4-3/4-10UNCX26	45°	600	F16	58	120	2500	70:1	18	23	23
WG238	501	152.4	343	254	300	40	88	201.5	64	5-5/8-11UNCX26	22.5°	600	F25	87	170	6250	175:1	44	23	61
WG308	544	159.05	387	254	340	50	111	245	77	8-M16X24	22.5°	750	F25	111	150	9800	275:1	69	23	92
WG358	602.3	175.3	442.3	298	350	55	130	262	86	8-M20X30	22.5°	750	F30	130	170	18000	532:1	132	23	130
WG408	639	233.2	540	356	420	70	156	276	92.5	8-1-5/8-8UNCX35	22.5°	750	F35	156	180	32000	700:1	175	25	215
WG448	671	239	556.5	356	415	70	167	353	83	8-1-5/8-8UNCX35	22.5°	750	F35	166.8	165	42000	1233:1	308	23	230
WG508	719.8	300.3	675.7	406	475	110	253	368.5	120.5	8-M36X50	22.5°	750	F40	252.8	190	60000	1254:1	313.5	25	350

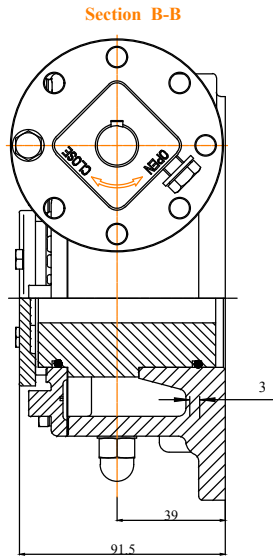
* E=Pilot hole pre-drilled in bore to facilitate boring keyway. EI(Max) = maximum stem size the keyway can be bored.



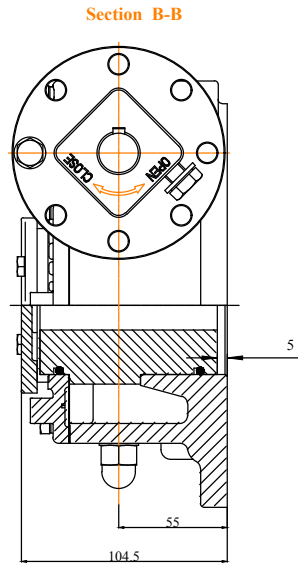
**AUSTRALIAN
PIPELINE VALVE®**
www.australianpipelinevalve.com.au



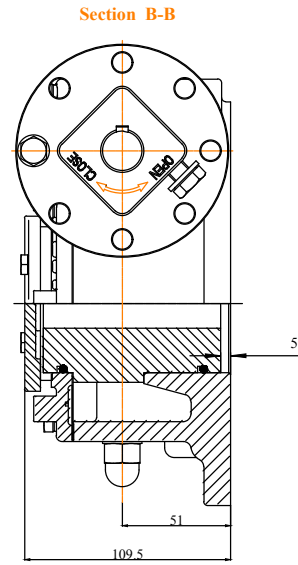
SIDE VIEW REDUCTION GEAR VERSIONS



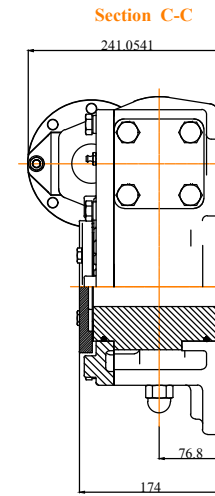
MODEL: WG007



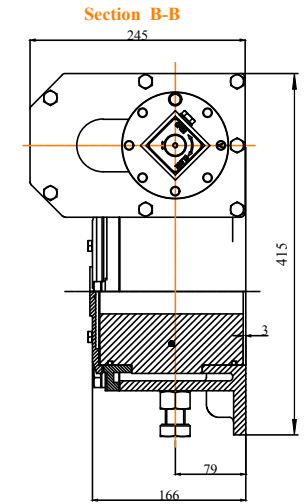
MODEL: WG008



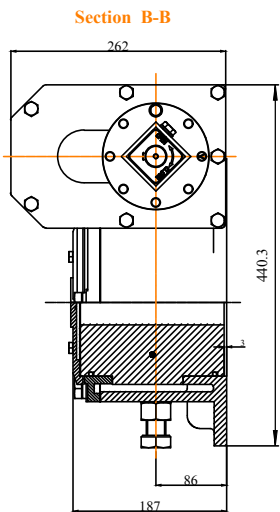
MODEL: WG108



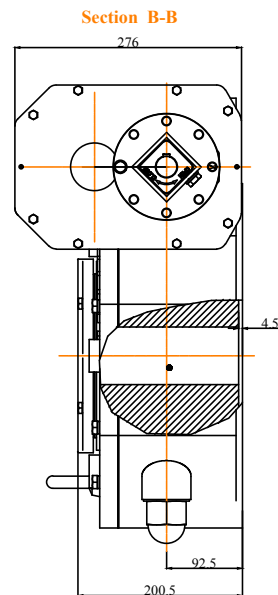
MODEL: WG238



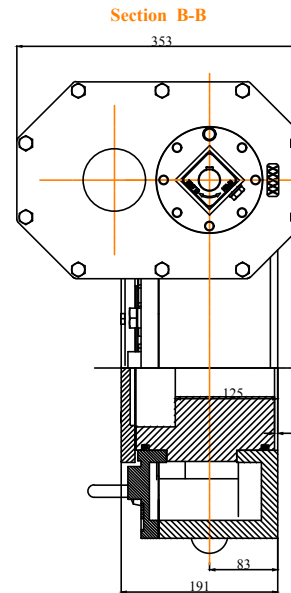
MODEL: WG308



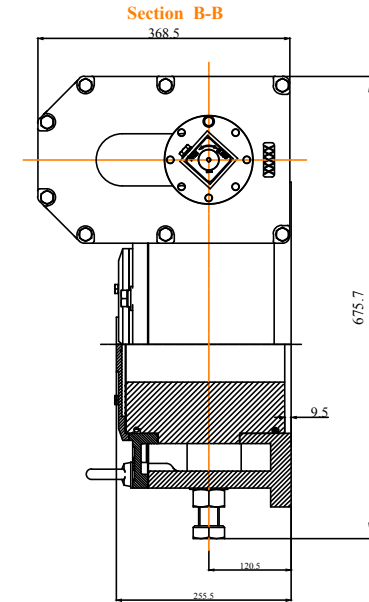
MODEL: WG358



MODEL: WG408



MODEL: WG448



MODEL: WG508